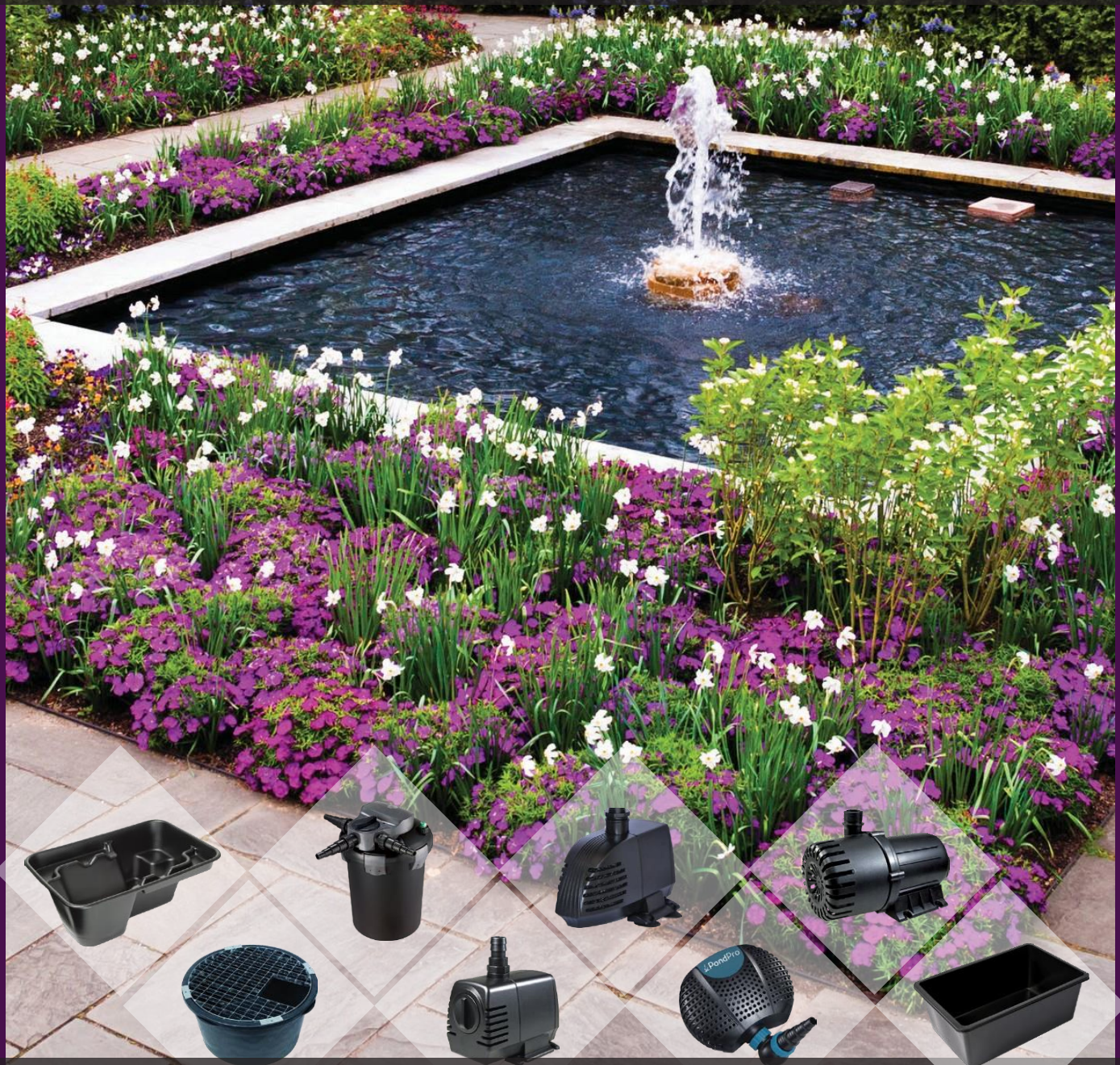


WATER GARDENING



PRODUCT CATALOGUE JULY 2022



BETTER

100% Australian Owned.
European made product range designed for the Australian pump market.
Premium quality product at competitive pricing.



FASTER

Reach solutions faster through our extensive pump range that services the domestic, commercial, agricultural and waste water pump market in Australia. Each product is backed by the exceptional REEFE®Pumps service and support guarantee.



EASIER

Superior product designed using advanced technology to increase service life, ease of installation and maintenance. Product manufactured to stringent testing standards guaranteeing efficient and durable product to better service the pump market.

TABLE OF CONTENTS

POND PUMPS	PAGE 7
SOLAR POND PUMPS	PAGE 12
FOUNTAIN NOZZLES	PAGE 15
POND LINER	PAGE 20
PONDS & GRATES	PAGE 22
FILTRATION	PAGE 27
VACUUMS	PAGE 29
POND TREATMENTS	PAGE 30
WATERFALLS & LED LIGHTBARS	PAGE 35
LIGHTING	PAGE 38
MIST DIFFUSERS	PAGE 38
WATER FEATURES & PLANTERS	PAGE 39
ORNAMENTS	PAGE 40
BASKETS	PAGE 41
HOSE & TUBING	PAGE 41
NETS	PAGE 41
PARTS	PAGE 42

©Ascento Group Australia 2022. This publication is copyright and no part may be copied or reproduced in any manner whether it be electronic or otherwise without prior written permission. Some images in this catalogue are courtesy of other persons. Ascento reserves the right to alter text, information and illustrations in this catalogue for reasons of product development or to correct errors. Due to the processes (photography, scanning, printing) involved in producing this catalogue, actual colours may differ from those depicted. Variations may also occur due to the product manufacturing process. Prices, sizes and other information contained herein are approximate and may be varied at the discretion of Ascento Group Australia without notice. Ascento and Ascento Group in all cases means Ascento Group Australia (ABN: 20 527 073 843).

INDEX

	PAGE		PAGE
Baskets	41	Aquatic Planting Baskets	
Filtration	27	Foam Sponge Prefilters	
		Submersible Tray Filters	
		External Biological Filters - Filtrapure	
		Biofilters - External 4 Stage Filters	
		Pressure Filters with Integral UV	
		Green to Clean Kits	
		Ultra Violet Pond Clarifiers	
Fountain Nozzles	15	Fountain Nozzle Sets - Plastic	
		Solar Fountain Jet Nozzle	
		Foaming Jet Nozzle	
		Fan Jet Nozzle	
		Single Jet Nozzle - Clear Stream Jet	
		Crown of Jets	
		Waterbell Nozzle	
Hose & Tubing	41	Clear Vinyl Tubing	
		Poolflex Spiral Ribbed Anti-Kink Hose	
		Hose Clamps for Spiral Ribbed Tubing	
Lighting	38	LED Spotlights	
		Fountain Ring Light	
Mist Diffusers	38	Mist Diffusers	
		Acrylic Waterwalls	
Nets	41	Pond Cover Nets	
Ornaments	40	Floating Ducklings	
		Crocodile Floaters	
		Artificial Floating Lily Sets	
Parts	42	Transformers & Electrical Accessories	
		Pond Pump Spare Parts	
Pond Liner	20	Pond Liner - Single Ply PVC Liner	
		Pond Liner - Pre-Packs	
		Pond Liner Underlay	
		Pond Liner Joining Products	
		Pond Liner Repair Kits	
Pond Pumps	7	Pond Pump - 240V	
		Pond Pump - Low Voltage	
		High Performance Series	
		Fountain Kit Pumps 240V	
		PondPro Pond Waterfall & Feature Pumps - Low Voltage	
		Pond Treatments	
		GreenAway	
		Extract of Barley Straw	
		SludgeAway	
		Feature Algae Clear	
		Filter Start	
		Flora Bloom	
		Duckweed Control	
		Pond Start	
		pH Adjust Up	
		pH Adjust Down	
		Clarifier Bacteria for Ponds	
		String Algae Treatment	
		Pond Conditioning Block	
		Feature Pond Treatment Block	
		pH Test Kit	
		Informal Ponds	
		Nesting Poly Ponds	
		Poly Cascades	
		Pebble Ponds & Grates	
		Round Ponds	
		Round Statue Ponds	
		Half Round Statue Ponds	
		Square Ponds	
		Rectangular Ponds	
		Ponds & Grates	
		Solar Pond Pumps	
		Solar Fountain Pumps	
		Solar Fountain Pumps with Battery Backup	
		Solar Floating Lily Fountain Pump	
		Solar DC Pond Pumps	
		Parts & Accessories Cables, Panels & Battery	
		Vacuums	
		Pond Vacuum Solutions - Pond Suckers	
		Water Features & Planters	
		Whiskey Barrel & Hand Pump Kit	
		Ornamental Cast Iron Hand Pumps	
		Half Wine Barrels & Planters	
		Wine Barrel Liner	
		Waterwalls & LED Lightbars	
		Acrylic Waterwalls	
		Combo Waterwalls - Stainless Steel	
		LED Light Bars for Acrylic Waterwalls	

SUBMERSTIBLE POND PUMP GUIDELINES

1 SAFETY FIRST! Water and power can be fatal!

All installations should be constructed, commissioned and maintained according to any relevant government laws, by-laws and regulations and according to the instruction manual provided with the product. Running garden pumps on extension leads is illegal. An earth leakage (RCD) device must be fitted. Any 240 Volt electrical work must be carried out by a licensed electrician.

Recommended usage for lengths of power cable/cord on pumps:

3 pin plug – 2m or 3m cable

Minimum length for outdoor use (patios, decks, courtyards)

3 pin plug – 10m cable

Recommended length for outdoor installations; however no more than 2m should be left uncovered by conduit or similar, and cable must not be left tightly wound in a coil.

2 pin plug – 1.8m cable Indoor use only, aquariums and table fountains

TIP! Pumps don't last forever. Always install to allow easy access and replacement!

2 CHOOSE THE RIGHT FLOW RATES

TIP! Use a garden hose to do a mock-up of the installation to get a rough idea of what flow you are trying to achieve.

Suggested flow rates:

Wall and table fountains 200 to 300 L/Hr

Small statues up to 0.4m high 400 to 500 L/Hr

Medium statues up to 0.8m high 600 to 750 L/Hr

Large and tiered statues up to 1.5m high 1000 to 1200 L/Hr

Statues over 1.5m and pond cascades 1200 to 2000 L/Hr

*Waterfalls and streams up to 0.4m wide 3000 to 4000 L/Hr

*Large waterfalls and streams up to 1.0m wide 6000 to 12000 L/Hr

*See our waterfall pump and tubing size guide for further information.

TIP! Add 20% to required flow rates to allow for friction loss in pipework.

3 DON'T FORGET THE HEAD HEIGHT!

Measure head height from the water level to the highest outlet. Add together the flow rates required, add 20% to allow for friction loss. If more than one function is being performed by the one pump, then choose a pump that can give the total flow at the greatest height.

TIP! Remember it is easier to throttle back an oversized pump, but there is nothing you can do with an under-sized pump!

4 POND SIZE – TURNOVER RATES

Suggested turnover rates:

Ponds up to 1000L	once per hour	TIP!
Ponds 1001 - 5000L	once every 2 hours	High fish stocks and koi ponds will require higher turnovers.
Ponds 5001 - 15000L	once every 3 hours	
Ponds over 15000L	once every 4 hours	Discuss this with your dealer for further advice.

5 TUBING SIZE AND LENGTH

Undersized tubing severely restricts the performance of the pump. Long runs and high waterfalls may require larger tubing diameters, or multiple tubing. Please enquire if you are unsure.

Flow in L/Hr	Tubing Ø (dia.)	Flow in L/Hr	Tubing Ø (dia.)
300 - 600	12mm	5001 - 8000	32mm
601 - 1200	16mm	8001 - 15000	40mm
1201 - 2000	20mm	15001 - 20000	50mm
2001 - 5000	25mm	Over 20000	Please Enquire

6 COST TO RUN PUMPS - The Cheapest pump is not necessarily the best long term option!

Example: A REEFE RP18000 filter and waterfall pump (250 Watt) costs approximately \$550.00 per year, run continuously. In comparison, a 0.75hp pool pump 15000 L/Hr (550 Watt) would cost approximately \$1220.00 per year, run continuously. So a short-term saving becomes a long-term liability!

TIP! Have an electrician set up a daylight sensor switch on waterfall pumps so the pump turns off at night - this saves power and money!

7 PUMP DIMENSIONS

We have included the dimensions of all our pond pumps in this catalogue. The sizes are in mm and include the cable exit in the length, and outlet height in the overall height.

8 DRY-MOUNTING POND PUMPS, IN-LINE USE

Pond Pumps are not designed to be self-priming, so when they are installed in a dry-mount or in-line situation, they must have "flooded" suction. That is, the pump must be installed below the water level so that the water gravity-feeds into the inlet of the pump. When dry-mounting, it is also necessary to protect the pump from the sun to avoid over-heating, and install a prefilter to prevent particles entering the suction line and blocking the pump. Not all pond pumps can be dry-mounted, check the tables in this product guide, there is a column that is headed, "DRY-MOUNT FLOODED", if this says NO, then this pump is not designed for dry-mount installations.

9 NOTE: THESE GUIDELINES ARE BROAD GENERALISATIONS & MAY NOT SUIT EVERY APPLICATION

Please consult your retail specialist for more information and advice. It is the user's responsibility to ensure that the product chosen is suitable for the users application. Incorrect use of products voids all warranty.

WATERFALL FLOW RATE CALCULATION

This calculation gives a recommended flow-rate for the height and width of your waterfall, for your chosen thickness of water flow.

- 1 Choose the thickness of water you want running over the top of your waterfall.** Generally, the higher the waterfall, the thicker the sheet of water should be. Our suggestions are:

Height of Waterfall	0.25m	0.5m	0.75m	1.0m	1.25m	1.5m	1.75m	2.0m	2.5m	3.0m
Suggested Thickness of Water Flow	5mm	7.5mm	10mm	12.5mm	15mm	17.5mm	20mm	22.5mm	27.5mm	30mm

- 2 Calculate the suggested flow-rate** by using the formula **Width of Waterfall (in metres) x Thickness (in mm) x 1450 (constant) = Flow in L/Hr.**
Example: For a waterfall 1.0m high, choose 12.5mm thickness, the waterfall is to be 0.8m wide. 0.8m (width) x 12.5mm (thickness) x 1450 (constant) = 0.8 x 12.5 x 1450 = 14,500 litres/hour

- 3 Choose a pump that is capable of providing the desired flow rate.** For the above example, select a pump that is capable of 14,500 L/Hr (or greater) at 1.0m head height. It is important to remember that the flow is at the height of the waterfall, so you need to look at the flow-charts to find a pump that can give this flow or preferably more, at 1.0m head height. To allow for friction losses etc., in pipework, it is always best to over-specify.

TIP! If you encounter difficulty with calculations, or cannot find a large enough pump, please phone us on 1800 807 604

PUMP & TUBING SIZES FOR WATERFALLS

The chart below will assist you in choosing the correct pump and tubing required for the width and height of your waterfall. For larger waterfalls, give us a call!

Height of Waterfall	Width of Waterfall														
	0.25m			0.50m			0.75m			1.00m			1.25m		
	Flow L/Hr *	Pump Code	Tubing Size	Flow L/Hr *	Pump Code	Tubing Size	Flow L/Hr *	Pump Code	Tubing Size	Flow L/Hr *	Pump Code	Tubing Size	Flow L/Hr *	Pump Code	Tubing Size
0.25m	1815	12241	20mm	3625	12243	25mm	5440	12245	32mm	7250	12586	32mm	9060	9437	32mm
0.50m	2720	12243	25mm	5440	12245	32mm	8160	9437	32mm	10880	9468	40mm	13600	9468	40mm
0.75m	3625	12244	32mm	7250	9437	32mm	10900	9468	40mm	14500	9468	40mm	18200	9468	50mm
1.00m	4535	12245	32mm	9070	9437	32mm	13600	9468	40mm	18140	9499	50mm	22700	9499	50mm
1.25m	5440	9376	32mm	10900	9468	40mm	16305	9499	63mm	21800	9499	63mm	27200	enquire	63mm
1.50m	6345	9437	32mm	12700	9468	40mm	19100	9499	63mm	25400	9499	63mm	31800	enquire	63mm

IMPORTANT NOTES

- Pumps specified use typical parameters to give generally acceptable waterfall flow rates. Please check that these flow rates suit your application.
- Tubing sizes suggested are suitable for up to 5 metres of tubing length. For 5 - 10 metres, go up a size. For over 10 metres, please enquire!
- Regulating valves should always be included in the pipe work setup.

HEALTHY POND TIPS

WATER QUALITY

The overall health of a pond is largely determined by the filtration efficiency and the balance of the pond water. Bad water quality can be as a result of a number of factors, including improper filtration, unbalanced water chemicals, excessive livestock and many more. Fish can take care of themselves if the pond keeper cares for the water. Check the pH of the water regularly - especially after heavy rain.

AQUATIC PLANTS

Water-borne plants play a critical role in the health of an aquatic ecosystem. Suggested plant coverage for a pond is between one third and one half the pond surface area. Be careful not to over plant, as plants dissolve oxygen from the pond water during the day, which may lead to oxygen deprivation at night. Oxygen deprivation at night can lead to numerous pond health complications, and is particularly threatening to fish.

CHOOSING FISH STOCK

Fish are a great ornamental addition to a pond, but require constant care. The key to success is moderation. When choosing fish, carefully consider the home and environment into which they will be placed. For example: a small or shallow pond will not be able to sustain large fish, neither will it be able to support copious quantities of fish. High fish stock can quickly cause an imbalance in pond health and in turn affect the health of the fish. This can be prevented with the installation of a properly designed bio-filtration system. Refer to your local fish livestock supplier for more information and advice.

ALGAE TREATMENT GUIDE

1 ASCERTAIN THE TYPE OF ALGAE

GREENWATER ALGAE is microscopic and causes the water to look like green cordial or pea soup. The algae is often so small it is impossible to filter from the pond water.

BLANKETWEED looks like green cotton wool and floats on the surface. Another variety may also proliferate in water courses and streams as "slime", and sometimes on the pond walls.

2 TREAT THE ALGAE ACCORDING TO THE TABLE BELOW

Use the preventative treatments as suggested, to reduce further outbreaks. Note: If the pH of the pond water is high, treatments will not be as effective.

GREEN WATER ALGAE

TREATMENT OPTION:

Check pH with: pH Test Kit, and if high

Adjust with: PondPro® pH ADJUST DOWN

Then Treat with: PondPro® Green Away

Followed by PondPro® Sludge Away (to consume dead algae)

PREVENT FURTHER OUTBREAKS WITH:

PondPro® Extract of Barley Straw with Clarifier Bacteria

OR Install a Biofilter & U.V. Clarifier for long term prevention

BLANKETWEED

TREATMENT OPTION:

First: Physically remove as much as possible

Check pH with: pH Test Kit, and if high

Adjust with: PondPro® pH ADJUST DOWN

Then Use: String Algae Treatment

PREVENT FURTHER OUTBREAKS WITH:

PondPro® Extract of Barley Straw with Clarifier Bacteria

WARRANTIES - IMPORTANT NOTICE

Contact must be made with Ascento Group prior to replacing any product. Guarantee / warranty does not cover normal "wear and tear". All Ascento product warranties comply with the Australian Consumer Law where it applies.



POND & WATER FEATURE PUMPS 240V RP SERIES

Economical, quiet running, centrifugal pumps with generous cable lengths. These pumps have numerous applications for aquarium, garden fountains, table and wall fountains and hydroponics.

CODE	PUMP MODE L	CABLE LENG T H	DRY-MOUNT FLOODED	DIMENSIONS (mm)			INLET	OUTLET	WATTS	MAX FLO W (L/Hr)	MAX HD (m)	PRICE
				LENGTH	WIDTH	HEIGHT						
9017	RP260	5m	NO	60	45	60		10mm push fit	5.5	260	0.45	\$43.95
9031	RP550	5m	NO	75	50	70		10-13mm push fit	10	550	1.22	\$59.95
9062	RP610	10m	YES	120	60	85	1/2" BSP	3/8" BSP	11	610	1.2	\$79.95
9192	RP900	10m	YES	120	60	85	1/2" BSP	1/2" BSP	19	900	1.9	\$109.95
9093	RP1100	10m	YES	130	90	105	1/2" BSP	1/2" BSP	17	1100	2.0	\$129.95
9123	RP1500	10m	YES	130	90	110	1/2" BSP	1/2" BSP	20	1500	2.0	\$149.95
9154	RP2400	10m	YES	155	100	120	1" BSP	1/2" BSP	40	2300	2.4	\$199.95
9178	RP3500	10m	YES	170	120	150	1" BSP	3/4" BSP	60	3500	2.4	\$229.95
9185	RP4000	10m	YES	170	120	150	1" BSP	3/4" BSP	70	4000	2.75	\$249.95

APPLICATIONS

- Water Features
- Garden Ponds
- Indoor Fountains
- Urns and Amphoras
- Table Fountains
- Hydroponics
- Statues

FEATURES

- Proven Performance
- Fresh or Salt Water
- Fully Submersible
- Quiet, Continuous Operation
- Built in Flow Control
- Spare Parts Available
- Electrical Safety Approval to AS/NZS 60335.2.41
- Kit does not include fountain nozzles



Head (m)	Approximate Flow Rate in Litres per Hour (Without Restriction)								
2.75									(0@2.75m)
2.5							(0@2.4m)	(0@2.4m)	400
2.25							300	300	1000
2.0					(0@ 2.0m)	(0@ 2.0m)	600	600	1300
1.75				(0@1.9m)	200	250	850	1000	1650
1.5				200	400	500	1150	1500	2000
1.25		(0@ 1.2m)	(0@ 1.2m)	300	650	700	1350	2000	2400
1.0		40	100	475	700	850	1600	2500	2700
0.75		170	220	550	825	1000	1750	3000	3000
0.5	(0@0.45m)	400	450	675	950	1200	2000	3150	3400
0.25	150	480	525	800	1075	1350	2200	3300	3600
0.0	260	550	610	850	1100	1500	2300	3500	4000
MODEL	RP260	RP550	RP610	RP900	RP1100	RP1500	RP2400	RP3500	RP4000

POND & WATER FEATURE PUMPS LOW VOLTAGE

RPLV SERIES



Economical quiet running, centrifugal pumps in safe, low voltage, with generous 10m cable lengths (except RP550LV) and outdoor transformers. These pumps have numerous applications for aquariums, garden fountains, table and wall fountains and hydroponics. All are saltwater compatible and are fitted with flow control and prefilter foam (except RP550LV)

CODE	PUMP MODEL	CABLE LENGTH	DRY-MOUNT FLOODPROOF	DIMENSIONS (mm)			INLET	OUTLET	WATTS	MAX FLOW W (L/Hr)	MAX HD (m)	PRICE
				Length	Width	Height						
9604	RP550LV 12 Volt AC	5m	NO	75	50	70		10-13mm push fit	10	550	1.22	\$69.95
9659	RP850LV 24 Volt AC	10m	YES	120	90	85	1/2" BSP	1/2" BSP	19	850	1.8	\$99.95
9673	RP1100LV 24 Volt AC	10m	YES	130	90	105	1/2" BSP	1/2" BSP	17	1100	2.0	\$169.95
9697	RP1500LV 24 Volt AC	10m	YES	130	90	110	1/2" BSP	1/2" BSP	20	1500	2.0	\$199.95
9727	RP2400LV 24 Volt AC	10m	YES	155	100	120	1" BSP	1/2" BSP	40	2300	2.4	\$229.95
9758	RP4000LV 24 Volt AC	10m	YES	170	120	150	1" BSP	3/4" BSP	70	4000	2.75	\$289.95
9901	Low Voltage Extension Lead	10m	-	-	-	-	-	-	12V-24V	-	-	\$69.95

APPLICATIONS

- Water Features
- Garden Ponds
- Indoor Fountains
- Urns and Amphoras
- Table Fountains
- Hydroponics
- Statues

FEATURES

- Proven Performance
- Fresh or Salt Water
- Fully Submersible
- Quiet, Continuous Operation
- Built in Flow Control
- Low Voltage Outdoor Transformer with 10m cable (except RP550LV - 5m cable)
- Electrical Safety Approval
- Kit does not include fountain nozzles



Head (m)	Approximate Flow Rate in Litres per Hour (Without Restriction)					
2.75						(0 @ 2.75m)
2.5					(0 @ 2.4m)	400
2.25					300	1000
2.0			(0 @ 2.0m)	(0 @ 2.0m)	600	1300
1.75		(0@1.8m)	200	250	850	1650
1.5		200	400	500	1150	2000
1.25	(0 @ 1.2m)	300	650	700	1350	2400
1.0	40	475	700	850	1600	2700
0.75	170	550	825	1000	1750	3000
0.50	400	675	950	1200	2000	3400
0.25	480	800	1075	1350	2200	3600
0.0	550	850	1100	1500	2300	4000
MODEL	RP550LV	RP850LV	RP1100LV	RP1500LV	RP2400LV	RP4000LV



FILTER & WATERFALL PUMPS 240V HIGH PERFORMANCE SERIES

These pumps deliver the high performance needed for filter systems and spectacular waterfalls. With vortex Impeller design (on 10000, 18000 and 28000) and prefilter cage, these pumps will comfortably handle soft solids for filtration. They also feature wear-resistant ceramic bearings, asynchronous motors and thermal overload protection. Inline/dry-mounting is possible, with flooded suction. Cage is very easy to remove for maintenance.

CODE	MODEL	CABLE LENGTH (m)	DRY-MOUNT FLOODED	DIMENSIONS (mm)			INLET	OUTLET	WATTS	MAX FLOW (L/Hr)	MAX HD (m)	PRICE
				Length	Width	Height						
9376	RP6000	10m	YES	250	130	160	1" BSP	1" BSP	150	6000	5.0	\$589.95
9406	RP8000	10m	YES	250	130	160	1" BSP	1" BSP	200	8000	7.0	\$659.95
9437	RP10000	10m	YES	290	150	170	1" BSP	1" BSP	250	10000	9.0	\$759.95
9468	RP18000	10m	YES	290	150	170	1 1/2" BSP	1 1/2" BSP	250	18000	6.0	\$859.95
9499	RP28000	10m	YES	300	150	190	2" BSP	2" BSP	550	28000	7.0	\$999.95

APPLICATIONS

- Water Features
- Ponds
- Fountains
- Statues
- Waterfalls
- Filtration

Not suitable for salt water

FEATURES

- Fully submersible, patented design
- Quiet, continuous operation, low power consumption
- Thermal overload protection
- Soft solids handling
- Ceramic bearings
- Dry-mount with flooded suction
- Foam prefilter
- Adjustable base-plate can be rotated
- Electrical safety approval to AS/NZS 60335.2.41
- Kit does not include fountain nozzles

Head (m)	Approximate Flow Rate in Litres per Hour (Without Restriction)				
9.0			(0 @ 9.0m)		
8.0			2200		
7.5			3100		
7.0		(0 @ 7.0m)	4000		(0 @ 7.0m)
6.5		1800	4900		2900
6.0		2800	5500	(0 @ 6.0m)	5200
5.5		3700	6100	3000	8000
5.0	(0 @ 5.0m)	4200	6700	5200	10500
4.5	1600	5000	7300	7500	12500
4.0	2500	5500	7800	9000	14800
3.5	3500	6000	8300	10500	17200
3.0	4000	6500	8700	12000	19500
2.5	4800	7000	8900	13000	21000
2.0	5200	7500	9200	14000	23000
1.5	5400	7600	9500	15000	25000
1.0	5600	7800	9700	16000	26500
0.5	5800	7900	9900	17000	27250
0.0	6000	8000	10000	18000	28000
MODEL	RP6000	RP8000	RP10000	RP18000	RP28000



FOUNTAIN KIT PUMPS 240V

RFK SERIES



Economical, quiet running, centrifugal pumps with 10 metre cables. These pumps have numerous applications for aquariums, garden fountains, waterfalls and hydroponics. All these pumps are saltwater compatible and supplied with fountain nozzles which include a flow-control valve. Foam prefilter is included to provide protection for the rotor.

CODE	MODEL	FTN KIT INC L.	CABLE LENGT H	DRY-MOUNT FLOODE D	DIMENSIONS (mm)			INLET	OUTLET	WATTS	MAX FLO W (L/Hr)	MAX HD (m)	PRICE
					Length	Width	Height						
9246	RFK1100	YES	10m	YES	180	90	110	½"BSP	½"BSP	20	1100	2.0	\$189.95
9260	RFK1500	YES	10m	YES	180	90	110	½"BSP	½"BSP	20	1500	2.0	\$209.95
9284	RFK2400	YES	10m	YES	200	100	120	1"BSP	½"BSP	40	2300	2.4	\$304.61
9321	RFK4000	YES	10m	YES	215	120	150	1"BSP	¾"BSP	70	4000	2.75	\$359.95
9345	RFK5000	YES	10m	YES	240	140	170	1"BSP	¾"BSP	125	5100	4.5	\$439.95
9208	RFK6000	YES	10m	YES	240	135	180	1"BSP	¾"BSP	145	6000	4.0	\$499.95
9222	RFK8500	YES	10m	YES	240	150	180	1"BSP	1"BSP	226	8500	5.5	\$629.95

APPLICATIONS

- Water Features
- Ponds
- Fountains
- Statues
- Waterfalls
- Pond Filters
- Salt Water

FEATURES

- Proven Performance
- Fully submersible
- Quiet, Continuous Operation
- Built in Flow Control
- Energy Efficient
- Foam Prefilter
- Electrical Safety Approval to AS/NZS 60335.2.41

KIT INCLUDES

- Fountain Nozzles (vary depending on model)
- Risers, adjustable tee piece & waterfall take-off



Head (m)	Approximate Flow Rate in Litres per Hour (Without Restriction)							
5.5							(0 @ 5.5m)	
5.0							950	
4.5					(0 @ 4.5m)		1750	
4.25					350		2250	
4.0					750	(0 @ 4.0m)	2750	
3.75					1050	450	3200	
3.5					1350	900	3650	
3.25					1600	1350	4000	
3.0					2000	1800	4350	
2.75					(0 @ 2.75m)	2250	2000	4655
2.5				(0 @ 2.4m)	400	2600	2450	4960
2.25				300	1000	2800	2900	5410
2.0	(0 @ 2.0m)	(0 @ 2.0m)		600	1300	3100	3350	5860
1.75	200	250		850	1650	3300	3500	6210
1.5	400	500		1150	2000	3500	3950	6560
1.25	650	700		1350	2400	3700	4350	6905
1.0	700	850		1600	2700	4000	4800	7250
0.75	825	1000		1750	3000	4200	5035	7515
0.5	950	1200		2000	3400	4400	5270	7780
0.25	1075	1350		2200	3600	4600	5550	8140
0.0	1100	1500		2300	4000	5100	6000	8500
MODEL	RFK1100	RFK1500	RFK2400	RFK4000	RFK5000	RFK6000	RFK8500	



POND, WATERFALL & FILTER PUMPS LOW VOLTAGE PPW-LV SERIES

Suitable for ponds, streams, waterfalls, large water features, cascades and more, these top quality water pumps are designed to pump large quantities of water efficiently. Includes multistage hosetail outlet fitting for quick and easy installation to many standard tubing sizes. Low voltage pump - safer!

CODE	MODEL	CABLE LENGTH	DIMENSIONS (mm)			OUTLET (mm)	WATTS	VOLTS	MAX FLOW (L/Hr)	MAX HD (m)	PRICE
			Length	Width	Height						
14462	PPW3000LV	10	375	332	168	Multistage	30	12	3000	3.0	\$399.95
14479	PPW5000LV	10	375	332	168	Hosetail: 20	40	12	5000	3.5	\$519.95
14486	PPW10000LV	10	375	332	168	25 32 40	85	12	10000	5.0	\$819.95

APPLICATIONS

- Ponds
- Filtration
- Waterfalls
- Fountains
- Statues
- Saltwater

FEATURES

- Low wattage with high flow
- Ideal for filtration
- Safe low voltage
- Includes transformer
- Soft solids handling
- Large filter cage
- Energy efficient
- Electrical Safety Approval

NOTES

- Cannot be used with solar
- Cannot be powered by 12V battery



Head (m)	Approximate Flow Rate in Litres per Hour (Without Restriction)		
5.0			0 @ 5.0m
4.5			750
4.0			1500
0.35		0 @ 3.5m	2300
3.0	0 @ 3.0m	550	3075
2.5	450	1100	4000
2.0	800	1800	5050
1.5	1200	2550	6150
1.0	1650	3250	7400
0.5	2300	4020	8600
0.0	3000	5000	1000
MODEL	PPW3000LV	PPW5000LV	PPW10000LV

SOLAR FOUNTAIN PUMPS

RSF SERIES



World-class solar technology is combined with high quality brushless pumps and quality batteries in weatherproof cases, to produce this great range. Manufactured to our design and quality requirements with solar panels of superior technology. The fountain set enclosed will suit most applications. "Max Head" measurement is the maximum lift height in full sun.

CODE	MODEL	CABLE LENGTH	NUMBER OF PANELS	SOLAR PANEL (mm)		PUMP SIZE (mm)			OUTLET SIZE	SOLAR PANEL		MAX FLOW W (L/Hr)	MAX HD (m)	PRICE
				Width	Height	Length	Width	Height		WATTS	VOLTS			
4005	RSF175	5m	1	130	130	73	36	45	8.5mm push fit	2	6	175	0.7	\$164.95
4050	RSF300	5m	1	250	160	73	49	40	1/2" MBSP	3.5	8	300	0.9	\$234.95
4012	RSF470	5m	1	210	250	105	68	56		5	12	470	0.9	\$309.95
4029	RSF980	5m	1	250	330	130	85	72		8	12	980	1.0	\$499.95
4036	RSF1360	5m	1	440	510	130	85	72		20	18	1360	2.1	\$659.95
4067	RSF2500	5m	1	620	345	300	225	150	1" MBSP	25	18	2480	2.1	\$829.95
22399	RSF3400	5m	2	620	455	278	220	119		2 x 35	18	3400	3.0	\$999.95
22467	RSF5000	5m	2	670	530	278	220	129		2 x 50	18	5000	3.0	\$1139.95

APPLICATIONS

- Birdbaths
- Waterfalls
- Ponds
- Statues
- Fountains
- Saltwater

FEATURES

- Salt Water Compatible
- Flow Adjustment, Threaded Outlet
- Run Dry Protection (Excluding RSF175)
- Extension Cables Available (Refer Page 14)

KIT INCLUDES

- Solar Panel & Support Spike
- Pump With Cable
- Fountain Nozzles
- Float Pad (Excluding RSF2500, RSF3400, RSF5000)
- Spare Impeller



NOT SUITABLE FOR
Biofilters or
Night time operation

Head (m)	Approximate Flow Rate in Litres per Hour (Without Restriction)							
3.0							0@3m	0@3m
2.4							750	1100
2.0					0 @ 2.1m	0 @ 2.1m	1300	2050
1.75					210	613	1700	2500
1.5					420	1080	1900	2900
1.25					620	1371	2250	3250
1.0		0 @ 0.9m	0 @ 0.87m	0 @ 1m	747	1643	2500	3600
0.75	0 @ 0.7m	50	90	296	870	1882	2750	3950
0.5	54	138	232	546	1063	1925	2900	4350
0.25	113	223	345	781	1233	2309	3200	4700
0.0	170	300	470	980	1360	2480	3400	5000
MODEL	RSF175	RSF300	RSF470	RSF980	RSF1360	RSF2500	RSF3400	RSF5000



SOLAR FOUNTAIN PUMPS with BATTERY BACKUP RSFB SERIES

World-class solar technology is combined with high quality brushless pumps and quality batteries in weatherproof cases, to produce this great range. Manufactured to our design and quality requirements with solar panels of superior technology. The fountain set enclosed will suit most applications. "Max Head" measurement is the maximum lift height in full sun.

RSFB kits come complete with battery back-up for night-time operation and overcast conditions.

CODE	MODEL	CABLE LENGTH	NUMBER OF PANELS	SOLAR PANEL (mm)		PUMP SIZE (mm)			OUTLET SIZE	BATTERY	SOLAR PANEL		MAX FLOW (L/Hr)	MAX HD (m)	PRICE
				Width	Height	Length	Width	Height			WATTS	VOLTS			
4142	RSFB250	5m	1	340	260	73	49	40	½" MBSP	6 - 9V / 3.2Ah	7	7.6	230	1.25	\$379.95
4159	RSFB800	5m	1	515	345	105	68	56		12-24V / 4.5Ah	20	18	800	2.1	\$729.95
4166	RSFB1600	5m	2	515	345	130	85	72		12-24V / 7.0Ah	2 x 20	18	1560	3.2	\$979.95
4074	RSFB2500	5m	2	620	345	300	225	150	1" MBSP	12-18V / 12Ah	2 x 35	18	2480	2.1	\$1489.95
22412	RSFB3400	5m	2	670	530	278	220	119		12-18V / 24Ah	2 x 50	18	3400	3.0	\$1699.95

APPLICATIONS

- Birdbaths
- Waterfalls
- Ponds
- Statues
- Fountains
- Saltwater
- **Not suitable for Bio Filters**

FEATURES

- Salt Water Compatible
- Flow Adjustment
- Threaded Outlet
- 5m Cable On Pump And 5m Cable From Battery To Panel
- Battery Back-Up Time 2.5 To 7 Hours
- Extension Cable Available - (Refer Page 14)
- Adjustable settings on the battery adjusts the voltage output which changes the water flow
- Run Dry Protection On All Models

KIT INCLUDES

- Solar Panel & Support Spike
- Pump With Cable
- Battery Back-Up
- Fountain Nozzles
- Spare Impeller
- Float Pad (Excluding RSFB2500 & RSFB3400)



Head (m)	Approximate Flow Rate in Litres per Hour (Without Restriction)				
3.0				0 @ 3.2m	0@3.0m
2.4				500	750
2.0		0 @ 2.1m		680	0 @ 2.1m 1300
1.8		110		790	650 1700
1.5		210		950	1070 1900
1.25		315		1125	1361 2250
1.0	0 @ 1.1m	400		1195	1530 2500
0.75	145	580		1300	1837 2750
0.5	130	545		1390	2100 2900
0.25	285	680		1520	2343 3200
0.0	330	760		1560	2480 3400
MODEL	RSFB250	RSFB800	RSFB1600	RSFB2500	RSFB3400

SOLAR FLOATING LILY FOUNTAIN PUMP

RFL SERIES

This floating lily is fitted with integral solar panels and quality solar pump & nozzles for reliability. Very easy to install and maintain. Best used in areas with no shade as it requires full sun to operate. 2 year replacement warranty.



CODE	DESCRIPTION	MAX FLOW W	MAX HEAD	WATTS	VOLT - AGE	DIMENSIONS (mm)	PRICE
4043	RFL150 Solar Floating Lily	150L/Hr	0.5m	18	6	300 dia x 90 deep	\$149.95

APPLICATIONS

- Large bird baths
- Barrel / large water features
- Small to medium size ponds
- Saltwater

FEATURES

- Integral solar panels
- Includes 4 fountain nozzles
- Operates in direct sunlight only
- Suitable for saltwater applications

SOLAR DC POND PUMP PARTS & ACCESSORIES

These quality solar pumps are available to be purchased separately by consumers who want to operate a pump from a DC battery or similar.

**Performance varies according to the voltage supplied. Do not exceed rated voltage or motor burnout will result.



CODE	MODEL	VOLTS	POWER		MAX FLOW (L/HR)		MAX HEAD @ VOLT**		RUN-DRY PROTECTION	FLOW CONTROL	OUTLET	SIZE L X W X H (MM)	PRICE
			MAX WATTS @ VOLTS	@ VOLT**	@ VOLT**	@ VOLT**							
4098	RSF175	6-9	1w	6V	170	6V	0.65m	6V	No	Yes	8.5mm	73x36x45	\$64.95
			2.5w	9V	230	9V	1.2m	9V					
4173	RSFB250-RSFB230-RSF300	6-9	1.3w	6V	240	6V	0.7m	6V	Yes	Yes	1/2" MBSP	73x49x40	\$79.95
			3w	9V	330	9V	1.25m	9V					
4104	RSF470-RSFB760-RSFB800	12-24	3w	12V	470	12V	0.9m	12V	Yes	Yes	1/2" MBSP	105x68x56	\$109.95
			11.5w	24V	740	24V	2.4m	24V					
4111	RSF980-1360-RSFB1600	12-24	5w	12V	980	12V	1.0m	12V	Yes	Yes	1/2" MBSP	130x85x72	\$179.95
			21.5w	24V	1560	24V	3.2m	24V					
4180	RSF2500-RSFB2500	12-18	8w	12V	1800	12V	1.05m	12V	Yes	No	1" MBSP	294x221x148	\$399.95
			17w	18V	2500	18V	2.1m	18V					
26946	RSF3400-RSFB3400	12-18	17w	12V	2500	12V	2.0m	12V	Yes	No	1" MBSP	294x221x148	\$649.95
			33w	18V			3.5m	18V					
26953	RSF5000	12-18	26w	12V	3000	12V	1.8m	12V	Yes	No	1" MBSP	294x221x148	\$859.95
			61w	18V			3.0m	18V					

REPLACEMENT PANELS

CODE	MODEL	VOLTS	WATTS	PRICE
4197	Solar Panel for RSF175	5.7	2	\$149.95
4234	Solar Panel for RSF300	7.6	3.5	\$169.95
4333	Solar Panel for RSFB250	7.6	7	\$199.95
4203	Solar Panel for RSF470	11.5	5	\$269.95
4210	Solar Panel for RSF980	11.5	8	\$319.95
4227	Solar Panel for RSF1360 & RSFB800	17	20	\$539.95
4340	Solar Panels (Set of 2 Panels) for RSFB1600	17	2x20	\$729.95
4296	Solar Panel for RSF2500	17	35	\$739.95
4357	Solar Panels (Set of 2 Panels) for RSFB2500	17	2x35	\$1449.95
26960	Solar Panels (Set of 2 Panels) for RSF3400	17	2x35	\$1549.95
26977	Solar Panels (Set of 2 Panels) for RSFB3400 / RSF5000	17	2x50	\$1669.95

REPLACEMENT BATTERIES

CODE	MODEL	VOLTS	WATTS	PRICE
4258	Battery for RSFB250	6	3.2	\$289.95
4265	Battery for RSFB800	12	4.5	\$509.95
4272	Battery for RSFB1600	12	7	\$559.95
26984	Battery for RSFB2500	12	12	\$859.95
4289	Battery for RSFB3400	12	24	\$859.95

EXTENSION CABLES

CODE	DESCRIPTION	FOR MODELS	PRICE
4128	Ext. Cable 5m	RSF175 / RSF300 / RSFB250	\$34.95
11003	Ext. Cable 5m	RSF470 / 980 / 1360 / RSFB800 / 1600	\$39.95
10099	Ext. Cable 5m	RSF2500 / RSF3400 / RSFB2500 / RSFB3400 / RSF5000	\$49.95
4135	Ext. Cable 10m	RSF470 / 980 / 1360 / RSFB800 / 1600	\$54.95

Note: Maximum one extension cable per pump

FOUNTAIN NOZZLES

Fountain nozzles give life, interest and oxygenation to ponds.

Note that all nozzle types produce splash to some extent and thus should be kept in proportion to pond size. Standard rule for sizing is: Height of spray (water effect) should be less than the distance from fountain nozzle to the nearest pond edge – so a 2m diameter pond is limited to a 1m fountain spray. Height of spray greater than this will result in more splash, water loss and problems with dampness. Nozzles with sheet effects (Tulip and Waterbell), are very wind affected and should be used in sheltered areas only.

WATER LEVEL DEPENDENCY

Some nozzles are stated to be water level dependent. This means that if there is a surging or 'wave' effects in the pond, continuous fluctuations of the jet height will occur, which may not be a desirable effect for some clients. Water level dependant nozzles must be installed at a particular height relative to the water level. Refer to information for each type of nozzle.

To avoid fluctuation on water level dependent nozzles, install:

- a. Water level sensor and auto top-up for the pond
- b. Overflow drain
- c. Surge reducing "collars" around nozzles
- d. 'Wet edge' waterfalls may also assist in maintaining a constant level
- e. The effective alternative is to install the fountain nozzle on a floating pontoon.

IMPORTANT! Always ensure all installations comply with local government regulations.

Quality: Our commercial fountain nozzles are manufactured to stringent quality standards.

TIP: For larger nozzle sizes, or for performances greater than those listed, please contact us on 1800 807 604.

SOLAR FOUNTAIN NOZZLE SETS

CODE	DESCRIPTION	PRICE
24249	Solar Fountain Nozzle Set to suit RFL150	\$2.99
24218	Solar Fountain Nozzle Set to suit RSF175, RSF300, RSFB250	\$3.99
24225	Solar Fountain Nozzle Set to suit RSF470, RSFB800	\$7.99
24232	Solar Fountain Nozzle Set to suit RSF980, RSF1360, RSFB1600	\$8.99
26571	Solar Fountain Nozzle Set to suit RSF2500, RSFB2500, RSF3400, RSFB3400, RSF5000	\$9.99



FOUNTAIN NOZZLE SETS

CODE	DESCRIPTION	PRICE
13101	Fountain Set No. 1- 13mm push fit (not threaded) Includes riser, Waterbell and Double Daisy nozzles. Max Flow 1200L/Hr	\$34.95
13130	Nozzle Set #10 Includes telescopic riser, Daisy and Waterbell nozzles. 1/2" BSP connections plastic. Max Head 2m, Max Flow 2000L/Hr	\$24.95
13133	Nozzle Set #30 Includes telescopic riser with valve and waterfall take off, Double Daisy, Foaming Jet and Waterbell nozzles. 1/2" BSP connection (Add a 3/4" to 1/2" adapter for pumps with 3/4" outlet) Max Head 3m, Max Flow 3500L/Hr	\$29.95
13135	Nozzle Set #40 Includes telescopic riser, valve with waterfall take off, Double Daisy, Foaming Jet and Waterbell nozzles. 1" BSP connection (Add a 1" BSP nipple to fit pumps with a FBSP outlet) Max Head 3m, Max Flow 8000L/Hr	\$69.95



HOW TO READ COMMERCIAL FOUNTAIN NOZZLE CHARTS

The column headed "L/Min" is the flow required in litres per minute (To convert to Litres per hour, simple multiply by 60).

The column headed "Pressure – Metres" is the head pressure in metres to obtain the jet height required. For heights greater than 8.0m, please enquire.

For example: If a jet height of 2.0m is required with a 4mm single jet nozzle, a pump capable of 4L/Min (240L/hr) at 2.2m head is required to provide the desired effect.

While all information given is believed to be correct, due to differences in installation that are completely out of our control, no guarantee is given that the performance stated will be achieved, and variations are likely.

TIP! Don't forget to allow for friction loss in pipework, as this can have a drastic effect on the desired result.

FOAMING JET NOZZLE

These popular foaming jet nozzles create a column of frothy, aerated water.



25956



25963



25970



CODE	DESCRIPTION	PRICE
25956	35mm Oriface Foam Effect Fountain Nozzle - 1" BSP	\$199.95
25963	35mm Oriface Foam Effect Fountain Nozzle GR316 SS - 1" BSP	\$269.95
25970	50mm Oriface Foam Effect Fountain Nozzle GR316 SS - 1 1/2" BSP	\$599.95

FOUNTAIN CHARACTERISTICS

Noise Level	Moderate
Visibility	Excellent
Splash/Mist	Low
Wind Stability	Good
Aeration Quality	Good

HYDRAULIC DATA - Spray Height (metres)

Nozzle Size & Code		0.5	1.0	1.5	2.0	2.5	3.0	3.5	4.0	4.5	5.0
35mm (25956 & 25963)	Flow – L/Min	55	80	97	111	123					
	Pressure - Metres	0.75	1.5	2.25	3.0	3.75					
50mm (25970)	Flow – L/Min	125	176	217	252	282	310	335	360	381	402
	Pressure - Metres	0.75	1.5	2.25	3.0	3.75	4.5	5.25	6.0	6.75	7.5

FAN JET NOZZLE

With a particularly compact, fan shaped water stream with a thickness of 6mm, these nozzles are attractive when grouped around a center nozzle but even on it's own, will always find a place in any arrangement.

CODE	DESCRIPTION	PRICE
26021	1" Fan Jet Fountain Nozzle	\$179.95
26038	1 1/2" Fan Jet Fountain Nozzle	\$439.95

FOUNTAIN CHARACTERISTICS	
Noise Level	Good
Visibility	Excellent
Splash/Mist	Low to moderate
Wind Stability	Excellent
Aeration Quality	Poor



HYDRAULIC DATA - Throw (metres)

Nozzle Size & Code		0.5	0.75	1.0	1.5	2.0	3.0
1" (26021)	Flow - L/Min	51	60	67	80		
	Pressure - Metres	0.75	11	15	2.25		
	Spread in cm	61	69	77	120		
1 1/2" (26038)	Flow - L/Min	102	110	126	180	260	281
	Pressure - Metres	0.75	1.0	1.2	1.5	2.0	3.0
	Spread in cm	40	48	55	100	120	150



SINGLE JET NOZZLE - CLEAR STREAM JET

Brassjet nozzles create a display with minimum distortion. Designed for vertical columns or parabolic jets, often arranged in a group.

CODE	DESCRIPTION	PRICE
25987	4.75mm Single Jet Fountain Nozzle, adjustable angle - 3/8" BSP	\$59.95
25994	6.35mm Single Jet Fountain Nozzle, adjustable angle - 1/2" BSP	\$89.95
26007	10mm Single Jet Fountain Nozzle, adjustable angle - 3/4" BSP	\$129.95
26014	14mm Single Jet Fountain Nozzle, adjustable angle - 1" BSP	\$179.95



HYDRAULIC DATA - Stream Height (metres)

Nozzle Size & Code		1.0	1.5	2.0	2.5	3.0	3.5	4.0	5.0	6.0	7.0	8.0	9.0
4.75m m (25987)	Flow - L/Min	5.6	6.5	7.5	8.3	9.2	10.0	11.0	12.3				
	Pressure - M	1.25	1.85	2.45	3.10	3.70	4.30	5.00	6.10				
6.35m m (25994)	Flow - L/Min	11	14	16	19	21	23	25	27				
	Pressure - M	1.25	1.85	2.45	3.10	3.70	4.3	5.00	6.10				
10mm (26007)	Flow - L/Min	21	27	31	35	38	42	47	52	58			
	Pressure - M	1.25	1.85	2.45	3.10	3.70	4.3	5.0	6.10	7.35			
14mm (26014)	Flow - L/Min	44	55	65	73	81	87	94	105	116	125	134	143
	Pressure - M	1.25	1.85	2.45	3.10	3.70	4.3	5.0	6.10	7.35	8.55	9.80	11.00



CROWN OF JETS

Creates a triple-tiered effect of clear streams. Ideal for medium to very large sized displays.

CODE	DESCRIPTION	PRICE
25925	31 Crown of Jets Fountain Nozzle - 1/2" BSP	\$179.95
25932	19 Crown of Jets Fountain Nozzle - 1" BSP	\$299.95
25949	43 Crown of Jets Fountain Nozzle - 1" BSP	\$439.95

		HYDRAULIC DATA - Stream Height (metres)							
Nozzle Size & Code		0.5	1.0	1.5	2.0	2.5	3.0	3.5	4.0
1/2" BSP, 31 Jets (25925)	Flow - L/Min	25	40	50					
	Pressure - Metres	0.6	1.5	2.0					
1" BSP, 19 Jets (25932)	Flow - L/Min	25	40	50	58	65	72		
	Pressure - Metres	0.6	1.5	2.0	2.6	3.25	4.0		
1" BSP, 43 Jets (25949)	Flow - L/Min		62	78	90	101	115	125	140
	Pressure - Metres		1.5	2.0	2.6	3.25	4.0	4.5	5.2



FOUNTAIN CHARACTERISTICS	
Noise	Low
Visibility	Moderate
Splash/Mist	Poor
Aeration Quality	Poor

BRASS WATERBELL NOZZLE

Produces a glass-clear mushroom hemisphere. Best suited for indoor or sheltered outdoor use as it is very wind-affected.

CODE	DESCRIPTION	PRICE
25901	1/2" Bell Fountain Nozzle	\$229.95
25918	1" Bell Fountain Nozzle	\$289.95



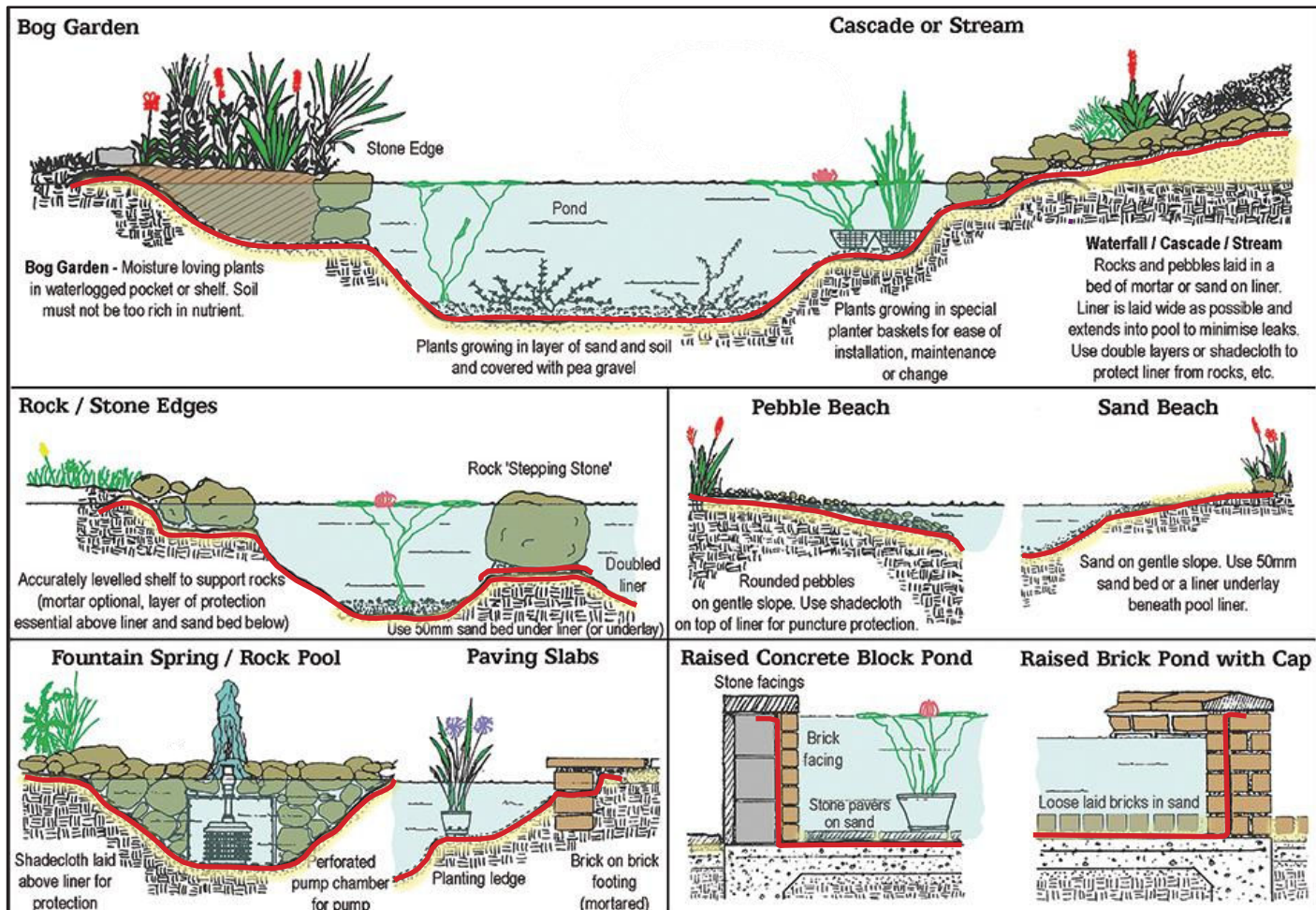
FOUNTAIN CHARACTERISTICS		HYDRAULIC DATA - Maximum Spread (cm)					
Sound Level	Good	Nozzle Size & Code		15	30	45	60
Visibility	Good	1/2" (25901)	Flow - L/Min	16	24		
Splash	Low		Pressure - Metres	0.7	1.0		
Wind Stability	Poor	1" (25918)	Flow - L/Min	16	24	30	34
Aeration Quality	Poor		Pressure - Metres	0.7	1.0	1.3	1.6

POND LINER

Pond liners are one of the most versatile and adaptable materials for pond construction. Besides providing the freedom to create whatever size and shape pond desired, pond liners also offer numerous logistical benefits as they are easy to transport and store.

However, pond liners do require care and forethought when installing. They can be susceptible to puncture or splits, so care is needed in installation to ensure no sharp objects damage the liner. We highly recommend installing an underlay beneath the liner, and a protective overlay above the liner for long term puncture prevention.

INSTALLATION CONCEPTS AND EDGE TREATMENT METHODS



GENERAL POND LINER GUIDELINES

A selection of common installation and edge methods are shown in the diagram above. Always ensure there are no stress points (or stretch points) and no direct sunlight exposure to the pond liner, as the guarantee does not include degradation due to UV exposure.

POND LINER SIZE FORMULA:

Width: maximum pond width + (2 x max. depth) + (2 x edge allowance)
 Length: maximum pond length + (2 x max. depth) + (2 x edge allowance)

EXAMPLE:

For a pond that is 4m x 3m, 0.5m deep at deepest point and 400mm edge allowance:
 Width: $3m + (2 \times 0.5 = 1) + (2 \times 0.4 = 0.8) = 4.8m$ wide
 Length: $4m + (2 \times 0.5 = 1) + (2 \times 0.4 = 0.8) = 5.8m$ long
 Therefore, you would order a pond liner 5m x 6m (liner is sold in whole metres only) and underlay 2m wide x 15m (to be cut into 3 pieces, each 5m long).

JOINING LINER

Liners can be joined on site with tape or glue. This requires a reasonable level of skill as an unsatisfactory job can easily result in cracks / leaks in the liner. Factory welds are recommended for submerged joins and long seams. Folds and creases are preferable to cutting and joining.

POND LINER - SINGLE PLY PVC LINER



High quality European-made PVC pond liner. Flexible and easy to install, long lasting, versatile material. May be joined to make much larger pieces, either with tape or glue or factory welding (see next page). Please read previous page for installation tips.

Warranty does not cover breakdown due to UV, so ensure the liner is protected from sunlight.

*Note: All roll sizes are nominal. **Cut to length pond liners are in whole metres only.

Top quality flexible frost resistant PVC liner



CODE	DESCRIPTION*	PRICE
14100	REEFE 0.5mm cut-to-length** per m ²	\$24.99
14102	2m x 50m roll	\$1299.95
14104	4m x 25m roll	\$1299.95
14106	6m x 25m roll	\$1999.95
14108	8m x 25m roll	\$2599.95
14110	10m x 20m roll	\$3299.95
14201	REEFE 0.8mm cut-to-length** per m ²	\$39.95
14204	4m x 25m roll	\$2899.95
14206	6m x 25m roll	\$4349.95
14208	8m x 25m roll	\$5799.95

POND LINER - PRE-PACKS



High quality European-made PVC pond liner. Flexible and easy to install, long lasting, versatile material. Liner pre-packs can be joined to make much larger pieces, either with tape or glue, or factory welding. Warranty does not cover breakdown due to UV, so ensure the liner is protected from direct sunlight.

Top quality flexible frost resistant PVC liner



CODE	DESCRIPTION	SIZE	PRICE
14501	Pond Liner Pre Cut Packs PVC 0.5mm	2.0m x 3.0m	\$109.95
14505	Pond Liner Pre Cut Packs PVC 0.5mm	3.0m x 4.0m	\$219.95
14507	Pond Liner Pre Cut Packs PVC 0.5mm	4.0m x 5.0m	\$359.95
14509	Pond Liner Pre Cut Packs PVC 0.5mm	4.0m x 6.0m	\$409.95
14511	Pond Liner Pre Cut Packs PVC 0.5mm	5.0m x 6.0m	\$559.95
14513	Pond Liner Pre Cut Packs PVC 0.5mm	6.0m x 7.0m	\$679.95
14515	Pond Liner Pre Cut Packs PVC 0.5mm	6.0m x 8.0m	\$729.95

POND LINER UNDERLAY



This high quality synthetic fabric underlay will protect the pond liner from cuts and leaks from sharp objects, extending the life of the pond and making installation significantly easier. A worthwhile investment!

Top quality, non-rotting synthetic material.



CODE	DESCRIPTION	SIZE	SOLD AS	PRICE
14400	High Density Pond Liner Underlay Fabric 200g/m ²	2m wide	Per m ²	\$14.95
14403		2 x 5m	Prepack	\$99.95
14451		2m x 50m	Roll	\$1196.95



POND LINER JOINING PRODUCTS

When multiple pieces of liner require to be joined to achieve the desired pond shape, look no further than our range of top quality joining products and services.

CODE	DESCRIPTION	FOR LINER TYPE	PRICE
14615	Joining Tape for PVC/EPDM Pond Liner 75mm x 6m	PVC / EPDM	\$159.95



POND LINER REPAIR KITS

Replacing damaged liner can be a costly and time consuming project. Repair damaged liner with these complete pond liner repair kits for PVC and Poly ponds.

CODE	DESCRIPTION	FOR LINER TYPE	PRICE
14700	Poly Pond Repair Kit - HDPE	Poly	\$44.95
14702	PVC Pond Liner Repair Kit	PVC Only	\$34.95



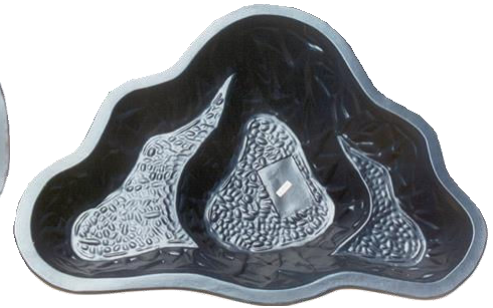
**Discover The Endless Pond
Design Possibilities With
Pond Liners**



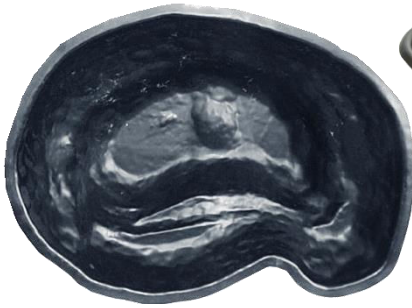
A Lakeland Pond



B Windermere Pond



C Ennerdale Pond



D Macquarie Pond



E Jupiter Pond



F Iris Pond



G Start Pond



H Angel Falls Cascade



Group cascades together to create a longer and more impressive cascade display



Utilise the inbuilt shelf space to grow aquatic plants!



INFORMAL PONDS

These ponds are robust, light to handle and are very popular. Top quality ponds manufactured in the United States. They need care in installation (backfilling), as they will deform from weight and pressure of water if not supported. The black colour gives the best illusion of depth and allows the decorative features of the pond to stand out e.g. fountains, plants, fish. Warranty does not cover degradation due to UV, so ensure the pond is protected from sunlight.

CODE	DESCRIPTION	DIMENSIONS (mm)			CAPACITY	IMAGE REF (PG 24)	PRICE
		Length	Width	Height			
15100	Lakeland - Polyethylene Pond Large sized and popular – suitable for fish, plants and water features.	2280	1340	480	800L	A	\$849.95
15104	Windermere - Polyethylene Pond Informal peanut shape with plenty of shelving for pond plants and good depth for fish.	1890	1340	465	487L	B	\$679.95
15106	Ennerdale - Polyethylene Pond The perfect shaped pond for any corner of the garden. Ideal for combining with a waterfall.	1690	1200	420	332L	C	\$619.95
15112	Macquarie - Polyethylene Pond The smallest in the poly pond range – popular kidney shape.	1010	780	270	85L	D	\$319.95



NESTING POLY PONDS

Nesting ponds are a great space saving solution for your store - multiple sizes can be nested into each other saving considerable floorspace! With the attractive designs which include shelves for mini "bog gardens" and pond plants these are sure to be appealing to the aspiring water gardener and to our wonderful native pond life - with a selection of small to large sized ponds.

CODE	DESCRIPTION	DIMENSIONS (mm)			CAPACITY	IMAGE REF (PG 24)	PRICE
		Length	Width	Height			
15155	Jupiter 230 Pond	1190	790	450	230L	E	\$349.95
15179	Iris 150 Pond	1200	900	400	150L	F	\$354.95
15186	Iris 240 Pond	1350	900	450	240L	F	\$489.95
15140	Start 150 Pond	1190	790	420	150L	G	\$209.95
15142	Start 250 Pond	1350	1050	450	250L	G	\$289.95
15144	Start 500 Pond	1780	1400	500	500L	G	\$559.95
15131	Start 750 Pond	2020	1600	550	750L	G	\$834.95
15148	Start 1000 Pond	2150	1700	650	1000L	G	\$1159.95



POLY CASCADES

A cascade is a great way to create an impressive water inlet to any pond.

Top quality product - manufactured in Europe

CODE	DESCRIPTION	DIMENSIONS (mm)			IMAGE REF (PG 24)	PRICE
		Length	Width	Height		
15194	Angel Falls Cascade	820	660	200	H	\$129.95

PEBBLE PONDS



Pebble ponds are designed to be installed flush with ground level and covered with decorative pebbles. A geyser fountain, millstone or statue is then installed on top. An above-ground feature can be made using blocks or sleepers. Excellent where space is limited. These are great for areas where small children are likely to be around. Warranty does not cover degradation due to UV, so ensure the pond is protected from direct exposure to sunlight. NOTE: INTERNAL SUPPORT ESSENTIAL FOR GRATES

CODE	DESCRIPTION	ITEM	DIMENSIONS		IMAGE	PRICE
			DIA / L X W X H	DEPTH		
15209	Round Pond w 600mm dia Round Grate Max Load: 100kg. Capacity 90L	Pond	600mm	360mm	A	\$369.95
		Grate	600mm			
15216	Round Pond w 800mm dia Round Grate Max Load: 100kg. Capacity 160L	Pond	800mm	320mm	A	\$519.95
		Grate	880mm			
15223	Round Pond w 1040mm dia Round Grate Max Load: 100kg. Capacity 340L	Pond	1120mm	345mm	A	\$979.95
		Gate	1040mm			
26380	Rectangular Pond w 695x340mm Grate Max Load: 100kg. Capacity: 65L	Pond	780 x 390mm	300mm	B	\$279.95
		Grate	695 x 340mm			
15247	Rectangular Pond w 785x470mm Grate Max Load: 100kg. Capacity 90L	Pond	790 x 480mm	310mm	B	\$334.95
		Grate	785 x 470mm			
15224	90L Round Fountain Pond with Ontario Lid Complete with 3 way valve, access hole & multi-pipe outlets. Supports large water features. Max 100kg	Pond	600mm	360mm	C	\$274.95
15228	195L Round Fountain Pond with Ontario Lid Complete with 3 way valve, access hole and multi-pipe outlets. Supports large water features. Max 100kg	Pond	880mm	320mm	C	\$489.95
15229	275L Round Fountain Pond with Ontario Lid Complete with 3 way valve, access hole and multi-pipe outlets. Supports large water features. Max 100kg	Pond	1120mm	345mm	C	\$889.95
15236	Ontario Moulded Lid only - Suits 15506 Supports large water features - Max 100kg	Lid	600mm		D	\$229.95
15238	Ontario Moulded Lid only - Suits 15513 Supports large water features - Max 100kg	Lid	880mm		D	\$384.95
15239	Ontario Moulded Lid only - Suits 15284 Supports large water features - Max 100kg	Lid	1100mm		D	\$609.95
15226	90L Round Fountain Pond with Square Grate & insert Sturdy pebble pond capable of supporting large water features - Max 100kg	Pond	600mm	360mm	E	\$249.95
		Grate	600x 600mm			
15230	150L Round Fountain Pond with Square Grate & insert Heavy duty pebble pond capable of supporting large water features. Pond Code 15282 - Max 100kg	Pond	880mm	320mm	E	\$519.95
		Grate	800 x 800mm			
15232	Square Pond with Galvanised Grate & Insert - 165L	Pond	840 x 840mm	300mm	F	\$729.95
		Grate	800 x 800mm			
15234	Square Pond with Galvanised Grate & Insert - 215L	Pond	1150 x1150mm	260mm	F	\$1154.95
		Grate	1000 x 1000mm			
15242	Galvanised Grate Square 600mm sq with access square Order Insert Separately - Code 15259	Grate	600 x 600mm		G	\$199.95
		Access	200 x 200mm			
15244	Galvanised Grate Square 800mm sq with access square Order Insert Separately - Code 15259	Grate	800 x 800mm		G	\$379.95
		Access	200 x 200mm			
15246	Galvanised Grate Square 1000mm sq with access square - Order Insert Separately - Code 15259	Grate	1000 x 1000mm		G	\$539.95
		Access	200 x 200mm			
15250	600mm Grate Only - Round with Access Square suits 15506	Grate	600mm		H	\$259.95
		Access	200 x 200mm			
15252	880mm Grate Only - Round with Access Square suits 15513	Grate	900mm		H	\$469.95
		Access	200 x 200mm			
15261	1040mm Grate Only - Round with Access Square suits 15284	Grate	1040mm		H	\$699.95
		Access	200 x 200mm			
26397	Grate Only - Rectangular with Access Square suits 15520	Grate	695 x 340mm		I	\$199.95
		Access	200 x 200mm			
15254	Grate Only - Rectangular with Access Square suits 15537	Grate	785 x 470mm		I	\$219.95
		Access	200 x 200mm			
15259	Insert Access Square for all above (Must be ordered separately)	Insert	200 x 200mm		J	\$59.95





ROUND PONDS

When set up properly, formal ponds for water features and statues, enhance any garden or outdoor area. Warranty does not cover degradation due to UV, so ensure the pond is protected from sunlight.

CODE	DESCRIPTION	PRICE
15506	Victoria Fountain Pond, Round Black Pond size: Top 680mm diameter x 365mm deep – 90L Internal Size: Top 615mm diameter, Base 520mm x 350mm deep Product Features: Tough yet flexible, durable polyethylene, UV resistant, hand grips, fully recyclable, strong reinforced rims. Multiple Uses: Grey water container, small ponds, pebble ponds (round lid available 15236), food waste, parts cleaning, aquarium and hydroponic applications, planters, fertiliser bins. (Not food grade – animal use only)	\$109.95
15513	Victoria Fountain Pond 880 – Black Pond size: 880mm diameter x 320mm deep – 150L Internal size: Top 800mm diameter, Base 750mm x 305mm deep	\$239.95
15284	Fountain Pond 1110 – Black Pond size: 1120mm diameter x 345mm deep - 275L Internal size: Top 1050mm diameter, Base 990mm x 335mm deep These ponds are very popular and are very strong in construction, capable of supporting large water features (with galvanised grate).	\$389.95



ROUND STATUE PONDS

Perfect size for the catchment of a large fountain or water feature!

CODE	DESCRIPTION	PRICE
15287	3'6" Black 1190mm dia x 220mm deep x 50mm edge – 190 litre (Internal size: 1085mm diameter x 210mm deep)	\$299.95
15313	5' Black 1590mm dia x 300mm deep x 55mm edge – 495 litre (Internal size: 1480mm diameter x 290mm deep) Note: Due to the manufacturing process, some imperfections may be present.	\$599.95



HALF ROUND STATUE PONDS

Ideal for waterfall catchments or water features installed against a wall.

CODE	DESCRIPTION	PRICE
15382	Half Round Fountain Pond - 3'6" Black 1160 dia x 220 deep – 90L (Internal size: 1090mm x 520mm x 210mm deep. 35mm edge)	\$309.95
15392	Half Round Fountain Pond - 5' Black 1550 dia x 300 deep – 240L (internal size: 1480mm x 730mm x 290mm deep. 35mm edge) Note: Due to the manufacturing process, some imperfections may be present.	\$464.95



SQUARE PONDS



When set up properly, formal ponds for water features and statues, enhance any garden or outdoor area. Warranty does not cover degradation due to UV, so ensure the pond is protected from sunlight.



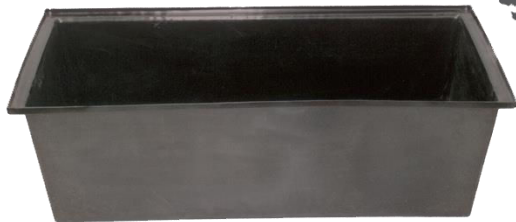
COD E	DESCRIPTION	PRICE
15420	Small Black 840mm square x 300mm deep x 40mm edge – 165L (internal size: 760mm square x 290mm deep)	\$359.95
15433	Large Black 1120mm square x 320mm deep x 60mm edge – 300L (internal size: 1000mm square x 300mm deep)	\$469.95
15440	Black Pond to suit 1000mm Square Grate 1150mm square x 260mm deep x 40mm edge – 215L Internal size: 1070mm square x 250mm deep This pond incorporates a ledge with locating bumps to hold the grate in place. Recommended for in-ground use, or strengthening frame would be required.	\$589.95
15460	Extra Large Black 1700mm square x 300mm deep x 50mm edge – 650L (Internal size: 1600mm square x 290mm deep). These ponds are specifically designed with a cut-down facility. They have a second 'lip' built in, so by cutting off the top lip (with a circular saw), a smaller pond measuring 1600mm square x 200mm deep is created. (490L) (Internal size approx. 1500mm square x 220mm deep)	\$999.95

Note: Due to the manufacturing process, some imperfections may be present.



RECTANGULAR PONDS

Premium quality plastic ponds for water storage, water features, ponds and more!



CODE	DESCRIPTION	PRICE
15520	Victoria Quadro Fountain Pond, Rectangular - Black Pond size: 780mm x 390mm x 300mm deep - 65L	\$84.95
15537	Victoria Quadro Fountain Pond, Rectangular - Black Pond size: 800mm x 485mm x 295mm deep - 90L	\$109.95

Victoria Fountain Ponds

Product Features: Tough yet flexible, durable polyethylene, UV resistant, hand grips, fully recyclable, strong reinforced rims.

Multiple Uses: Grey water container, small ponds, pebble ponds (grate available see p22), food waste, parts cleaning, aquarium and hydroponic applications, planters, fertiliser bins. (Not food grade – animal use only)

15530	Medium Black 1010mm long x 500mm wide x 310mm deep x 35mm edge – 120 litre (Internal size: 940mm x 430mm x 290mm deep)	\$349.95
15543	Large Black 1500mm long x 750mm wide x 300mm deep x 50mm edge - 250 litre (Internal size: 1400mm x 640mm x 280mm deep)	\$549.95
15553	Extra Large Black 1800mm long x 900mm wide x 300mm deep x 50mm edge – 380 litre (Internal size: 1700mm x 800mm x 280mm deep)	\$669.95

Note: Due to the manufacturing process, some imperfections may be present.

NOTE

Due to the chemical properties of the plastics, these ponds may bubble warp slightly during shipping and handling. To fix, simply place in a sunny location until the pond returns to its original shape, or is malleable enough to be pushed into shape. Once cooled, the pond will retain its shape.

FOAM SPONGE PREFILTERS

Extend the life of your pump and increase the health of the water by installing a foam prefilter on the inlet of your pump. Easy to install! Simply remove the foam filter and cage supplied with your pond or fountain pump and attach the prefilter. This performs a certain amount of biological filtration, and prevents the unwanted residue to pass through the pump, reducing the need of regular maintenance.

CODE	DESCRIPTION	PRICE
17106	Sponge Prefilter – 150 x 100 x 100 - 1/2" BSP threaded connection - Retail Hangpack Suits REEFE RP610 / 1100 / 1500 / 2400 and RFK1100 / 1500 / 2400	\$29.95
17108	Sponge Prefilter – 300 x 120 x 120 - 1/2" and 1" BSP threaded connection – Retail Hangpack Suits REEFE RP4000 / 6000 / 8000 / 10000 / 180000 / 20000, and RFK4000 / 5000 and other REEFE pumps with threaded inlets. Some sizes will need an additional threaded adapter	\$54.95



SUBMERSIBLE TRAY FILTERS

This submersible biological tray filters help maintain a clean and healthy pond by providing a large surface area for beneficial bacteria to grow and reduce pond waste. Prevents pump and fountain heads from clogging up with unwanted waste and residue particles. Threaded hosetail fittings included. Easy access for cleaning. Compatible with all REEFE RP and RFK series pond pumps.

CODE	DESCRIPTION	MAX POND SIZE	FLOW	SUCTION OUTLET SIZE	PRICE
9550	Submersible Bio-Filter RTF2000 305mm x 254mm x 115mm	2000L	Optimum : 1500 L/Hr Max: 4000 L/Hr	Hosetail 3/4"	\$129.95



EASY SELECTION CHART

SUITABLE FOR					
Max. Pond Size over 50cm deep, partly shaded	Max. Pond Size if full sunlight, over 50cm average depth	Max. Pond Size of shallow pond under 50cm average depth, partly shaded	Max. Pond Size if in full sunlight, shallow	Max. Pond size with fish in full sunlight, over 50cm average depth	Pond with fish in full sunlight, less than 50cm average depth
2000L pond	1750L pond	1750L pond	1250L pond	1250L pond	750L pond



EXTERNAL BIOLOGICAL FILTERS - FILTRAPURE

These efficient biofilters contain fine filter foam for mechanical filtering and two types of filter medium for effective biological treatment. Top and bottom inlet require gravity-feed back into pond. Includes over-flow and multi-hosetails for easy installation. Pump sizing is given for maximum pond size with 0.5m head. Ensure this suits your application, as if the pump is to supply other features, e.g. fountains, it may require a larger pump size.

CODE	DESCRIPTION	MAX POND SIZE (L)	OPTIMUM FLOW	INLET SIZE / TYPE	PRICE
17250	FiltraPure 4000 External Biological Filter Dimensions 350mm x 295mm x 400mm Required Pump Duty: 800-1000L/Hr Suggested Pump: REEFE RP1500	4000	1500L/Hr	Multi-hosetail	\$209.95
17251	FiltraPure 7000 External Biological Filter Dimensions 400mm x 295mm x 450mm Required Pump Duty: 1500-1600L/Hr Suggested Pump: REEFE RP2400 / PondPro PPW3000LV	7000	2300L/Hr	Multi-hosetail	\$259.95



PRESSURE FILTERS with INTEGRAL UV and BACKWASH SYSTEM



The PondPro Multistage Pressure Filters provide both mechanical and biological filtration processes that are essential to the health of your pond. Large system capacity, and foam surface area provides excellent filtration by allowing the increased growth of beneficial bacteria. Pressurised systems are ideal for waterfall applications. The unique external pressure indicator shows green light when filter is performing properly, and shows red light when filter cleaning is necessary, taking the guess work out of pond maintenance! Includes an easy-to-use backwash rinse system.

CODE	DESCRIPTION	MAX OPERATING PRESSURE	MAX FLOW	MAX POND SIZE	DIMENSIONS (MM)	PRICE
17319	Pressure Filter 6000 - with 11W UV	30kPa	5000 L/Hr	6000L	380 dia x 41 h	\$469.95
18798	Pressure Filter 9800 - with 11W UV	30kPa	9000 L/Hr	9000L	380dia x 520 h	\$569.95
17333	Pressure Filter 15,000 - with 18W UV	30kPa	10000 L/Hr	15,000L	380 dia x 730 h	\$759.95
26649	Pressure Filter 30,000 - with 55W UV	30kPa	12000 L/Hr	30,000L	450 dia x 715 h	\$1219.95



TIP Kick start the biological process with PondPro Filter Start

THE FILTRATION PROCESS

Step 1. Mechanical Filtration - Water is pumped into the filter creating the necessary pressure to begin the mechanical filtration stage. There are two phases in the mechanical filtration stage - coarse filtration and fine filtration. Each phase uses a specially designed foam sponge to effectively remove all sizes of unwanted debris.

Step 2. Biological Filtration - The biological filtration stage begins when water reaches the bottom of the filter. This stage uses bio-balls providing a habitat for beneficial bacteria to grow. These bacteria naturally convert harmful ammonia and other wastes into healthy nitrates that fertilise aquatic plants and support a healthy pond environment.

Step 3. UV Filtration - The final stage uses an Ultra-Violet (UV) light located in the middle of the filter. Exposure to the light kills algae as the water passes upward through the filter on its way to the pond.

TIP Keep your pond looking beautiful and natural! These pressure filters are specially designed so they can be partially buried in the soil.
NOTE: DO NOT submerge in water

EASY SELECTION CHART

Filter Code	SUITABLE FOR					
	Max. Pond Size over 50cm deep, partly shaded	Max. Pond Size if full sunlight, over 50cm average depth	Max. Pond Size of shallow pond under 50cm average depth, partly shaded	Max. Pond Size if in full sunlight, shallow	Max. Pond size with fish in full sunlight, over 50cm average depth	Pond with fish in full sunlight, less than 50cm average depth
17319	6000L	4800L	4800L	3250L	3250L	2500L
18798	9500L	7000L	7000L	5500L	5500L	3250L
17333	15,000L	10,500L	10,500L	7900L	7900L	5000L
26649	30,000L	24,000L	24,000L	17,500L	17,500L	10,000L

GREEN TO CLEAN KITS

It could hardly be simpler! Calculate your pond size, count your fish and choose from one of the suggested kits below. Kit comes complete with pressure filter (with integral UV filtration), PondPro filter pump and FREE PondPro Filter Start water treatment.



CODE	DESCRIPTION	MAX POND SIZE	PRESSURE FILTER MODEL	PONDPRO PUMP MODEL	FREE! PONDPRO TREATMENT	PRICE
17480	Green to Clean Kit with Pressure Filter, Pump and FREE PondPro Water Treatment	6,000L	1 x Filter 6000	PPW3200	PondPro Filter Start For more info, refer to page 38	\$799.95
17481		9,000L	1 x Filter 9000	PPW6500		\$859.95
17482		15,000L	1 x Filter 15000	PPW6500		\$1109.95
17486		30,000L	1 x Filter 30000	PPW10000		\$1979.95

POND VACUUM SOLUTIONS - POND SUCKERS

No more messy fishing about in the pond trying to remove dead plants or unwanted objects. These pond vacuum solutions make maintaining optimum pond health a breeze.



CODE	DESCRIPTION	PRICE
17570	<p>Magic Pond Sucker - 65mm wide Venturi effect pond sucker - Fast and efficient Removes pond sludge - Waste exits via 3m x 19mm tubing (incl in kit) Use with normal garden hose</p>	\$99.95
17572	<p>Pond Super-Sucker - 110mm wide with 115cm handle Incredibly effective, yet inexpensive, venturi operated pond vacuum. Cleans out pond sludge in minutes using click-on fittings with garden hose or power it from your pump. Waste may be released into your garden (for cheap fertiliser) or strained through fine mesh fabric. Waste exits via 3m x 19mm tubing (included in kit)</p>	\$159.95



Pond Vacuums are the fuss-free pond and water feature maintenance solution



PondPro POND TREATMENT RANGE

This complete range of new pond and water feature treatments makes maintaining optimum pond health a breeze! Treat any pond or aquatic ecosystem with these products which are formulated from 100% natural ingredients. Manufactured in the UK for Ascento Group Australia. All are safe for fish, wildlife and plants.

REMEMBER! Additional wholesale discounts when the entire range is stocked! Enquire for more information.



FEATURES

- 100% Natural!
- Child safe caps on all bottles
- Easy to function in-built measuring compartments in bottle - reduce wastage!
- Professional retail presentation
- Easy to follow dosage instructions

HEALTH PRECAUTIONS

IMPORTANT: Always follow the instructions to avoid risk of harm. Precautions may vary for different treatments. Refer to the back label on the bottle for full precautions & instructions. Follow at all times.

- Wash hands thoroughly after use
- Do not contaminate foodstuffs, utensils or food contact surfaces
- Keep out of reach of children
- Keep product in original container, in a cool dry location
- Store out of direct sunlight
- Do not re-use container, empty completely prior to disposal
- If swallowed, seek medical advice



GREEN AWAY

Clears green and cloudy water in ponds. A 100% natural flocculant designed to clarify green and cloudy pond water. Contains plant extracts which cause algae (pea soup / green algae) and fine suspended solids to clump together and fall to the bottom of the pond, leaving the water clean and clear.

TIP: Best used in conjunction with PondPro Sludge Away.

CODE	DESCRIPTION	TREATS	PRICE
13656	250mL Green Away Pond Treatment - 100% Natural	6,250L	\$34.95
13663	500mL Green Away Pond Treatment - 100% Natural	12,500L	\$54.95

DOSAGE INSTRUCTIONS

NOTE: SHAKE BOTTLE WELL BEFORE USE

For every 250L of water to be treated add 10mL to a bucket of pond water. Mix well and pour evenly over pond surface. For larger ponds, increase dose proportionally. In severe situations, repeat dosing may be necessary. Allow a minimum of 5 days between doses.

NOTE: In some instances, this product may cause the finely dispersed solids to initially float. If left, they will soon drop to the bottom of the pond. Overdosing may worsen the problem. However, it will not cause any harm to fish, filters, aquatic plants or wildlife.



EXTRACT OF BARLEY STRAW

An environmentally friendly product for the treatment of algae and blanket weed. It enhances the natural water chemistry, leaving the pond water clean and clear. The product contains no synthetic chemicals or artificial pesticides. Contains aqueous barley straw extract.

TIP: Use in conjunction with PondPro Sludge Away for best results.

CODE	DESCRIPTION	TREATS	PRICE
13625	250mL Extract of Barley Straw Pond Treatment 100% Natural	6,250L	\$44.95
13632	500mL Extract of Barley Straw Pond Treatment 100% Natural	12,500L	\$69.95

DOSAGE INSTRUCTIONS

NOTE: SHAKE BOTTLE WELL BEFORE USE

Initial Treatment: Add 40mL of product per 1000L of pond water, directly into the pond water.

Preventative Treatment: For every week throughout Spring and Summer, add 15mL for every 1000L of pond water, directly to the pond. During particularly warm weather, it is advisable to increase the frequency of dosing to maintain optimum results. If a UV system is used, frequency of dosing should be increased to every 5 days.



SLUDGE AWAY

Breaks down sludge in ponds and filters. A special blend of selected bacteria which will break down sludge and dead algae on pond bottoms and filters. Regular use through the summer months maintains good water clarity, healthy fish and can reduce the need to clean out the pond.

CODE	DESCRIPTION	TREATS	PRICE
13694	250mL Sludge Away Pond Treatment - 100% Natural	4,500L	\$34.95
13700	500mL Sludge Away Pond Treatment - 100% Natural	9,000L	\$54.95

DOSAGE INSTRUCTIONS

NOTE: SHAKE BOTTLE WELL BEFORE USE

Spring and Summer: Add 20mL of product per 4500L of pond water, every 2 weeks.

Autumn: Add 50mL of product per 4500L of pond water, every week.

NOTE: For larger ponds, dosage should be increased proportionally. Avoid adding product during particularly warm weather. This product cannot be overdosed.



FEATURE ALGAE CLEAR

Ensures clear, healthy water in water features. Solve the problem of green water, algae, blanket weed and slime in water features and feature ponds with Feature Algae Clear. Regular use will maintain good water clarity, eliminate stagnant odours and reduce the need for cleaning. Contains Extract of Barley Straw.

CODE	DESCRIPTION	TREATS	PRICE
13724	250mL Feature Algae Clear Pond Treatment - 100% Natural	20 - 25 Doses	\$39.95

DOSAGE INSTRUCTIONS

NOTE: SHAKE BOTTLE WELL BEFORE USE

Initial Treatment: Add 30mL of product for water features up to 22L capacity.

Maintenance Treatment: Add 10mL of product per week thereafter.

NOTE: This product cannot be overdosed.



FILTER START

A special blend of naturally occurring pond filter bacteria designed to kick start new filters and boost activity in existing filters. This 100% natural, fish and frog safe water treatment also enables earlier addition of fish to new ponds.

TIP: Use in new ponds immediately after dosing with PondPro Pond Start.

CODE	DESCRIPTION	TREATS	PRICE
13717	250mL Filter Start Pond Treatment - 100% Natural	5,000L	\$34.95

DOSAGE INSTRUCTIONS

NOTE: Shake Well Before Use

Initial Treatment: Add 50mL of product per 1000L of pond water, directly into the pond water.

To Boost Existing Filters: Add 40mL for every 1000L of pond water, each week for 4 weeks.

Maintenance Treatment: To maintain optimum health for your filters, add 20mL for every 1000L of pond water, every month.



FLORA BLOOM

Enjoy all the benefits of healthy aquatic plant life with this 100% natural water treatment. Contains a special blend of nutrients to enhance the growth of lilies and other aquatic plants. Also balances natural water chemistry to prevent green water problems.

CODE	DESCRIPTION	TREATS	PRICE
13731	250mL Flora Bloom Pond Treatment - 100% Natural	5,000L	\$39.95

DOSAGE INSTRUCTIONS

NOTE: SHAKE BOTTLE WELL BEFORE USE

Initial Treatment: Add 50mL of product per 1000L of pond water, directly into the pond water.

Maintenance Treatment: Add 20mL for every 1000L of pond water, directly to the pond, per week throughout the growing season.

For Small Water Features: Apply initial does as above (proportionally reduced), then 10mL weekly.



DUCKWEED CONTROL

Controls the spread of duckweed. A natural bacterial product which prevents the growth of duckweed by modifying the water chemistry and creating conditions which prevent the spread of this problematic aquatic plant.

CODE	DESCRIPTION	TREATS	PRICE
13649	250mL Duckweed Control Pond Treatment - 100% Natural	4,500L	\$44.95

DOSAGE INSTRUCTIONS

NOTE: SHAKE BOTTLE WELL BEFORE USE

Initial Treatment: For every 450L of water to be treated, add 25mL of product to a watering can or bucket of pond water. Mix well, and pour evenly over pond surface.

Maintenance Treatment: Add 10mL of product per 450L or pond water, weekly until duckweed stops growing.

NOTE: This product cannot be overdosed.



POND START

Neutralises harmful chemicals in tap water. A natural solution designed to neutralise chloramine and other harmful chemicals in tap water. Ponds are often topped up with tap/town water, which contain harmful chemicals and heavy metals. These can damage the protective mucous membrane (slime coat) on fish. Pond Start protects the fish from this damage and prevents the build up of ammonia from the break down of chloramine.

TIP: In a NEW POND, use in conjunction with PondPro FilterStart water treatment to kick start the biological activity.

CODE	DESCRIPTION	TREATS	PRICE
13670	250mL Pond Start Pond Treatment - 100% Natural	16,000L	\$31.95
13687	500mL Pond Start Pond Treatment - 100% Natural	32,000L	\$54.95

DOSAGE INSTRUCTIONS

NOTE: SHAKE BOTTLE WELL BEFORE USE

Add 15mL of product to the pond for every 1000L of water being treated, whenever the pond is filled or topped up with tap water.

This product is best added at the point where the tap water is entering the pond.

NOTE: This product cannot be overdosed.



TIP

Unbalanced pH Levels in a pond can lead to unhealthy fish and plant life. For best results, regularly test the water and treat with PondPro ADJUST UP / ADJUST DOWN. It is recommended the pH of the pond is maintained at around 7.4, as this is the average fish blood pH, but anything between 6.5 and 9.0 is considered a healthy pond.

pH ADJUST UP

An eco-friendly and non-toxic solution for the control of pH levels in ponds and aquariums with a neutral to acidic pH. Unbalanced pH levels can lead to unhealthy fish and plant life. Ensures fish health and reduces unnecessary stress. This treatment formula is 100% natural, containing no synthetic chemicals, herbicides or pesticides.

CODE	DESCRIPTION	TREATS	PRICE
13748	250mL Adjust Up Pond Treatment - 100% Natural	4,500L	\$41.95

DOSAGE INSTRUCTIONS FOR PONDS UP TO 4500L

NOTE: SHAKE BOTTLE WELL BEFORE USE

Using a pH test kit, measure pH of pond water.

FOR PONDS: Add Adjust Up directly to the water, 50mL at a time.

FOR AQUARIUMS: Add 10mL at a time.

Allow time for the product to circulate throughout the pond before remeasuring the adjusted pH.

Continue to add product until the desired pH is achieved.

NOTE: Product should be added where water is being re-circulated.



pH ADJUST DOWN

An eco-friendly and non-toxic solution for the control of pH levels in ponds and aquariums with a neutral to alkali pH. Unbalanced pH levels can lead to unhealthy fish and plant life. Ensures fish health and reduces unnecessary stress. This treatment formula is 100% natural, containing no synthetic chemicals, herbicides or pesticides.

CODE	DESCRIPTION	TREATS	PRICE
13755	250mL Adjust Down Pond Treatment - 100% Natural	4,500L	\$41.95

DOSAGE INSTRUCTIONS FOR PONDS UP TO 4500L

NOTE: SHAKE BOTTLE WELL BEFORE USE

Using a pH test kit, measure pH of pond water.

FOR PONDS: Add Adjust Down directly to the water, 50mL at a time.

FOR AQUARIUMS: Add 10mL at a time.

Allow time for the product to circulate throughout the pond before remeasuring the adjusted pH.

Continue to add product until the desired pH is achieved.

NOTE: Product should be added where water is being re-circulated.



CLARIFIER BACTERIA FOR PONDS

Clarifier Bacteria is a concentrated blend of specific bacteria and enzymes that have numerous superior abilities. Helps control algae by reducing nutrients which encourage algae growth. Reduces ammonia, nitrates, phosphorus, hydrocarbons and odours. Stabilises water chemistry and consumes pond sludge.

CODE	DESCRIPTION	TREATS	PRICE
18101	Clarifier Bacteria - 22.5g sachet	8,000L	\$29.95
18102	Clarifier Bacteria - 85g	30,000L	\$61.95



STRING ALGAE TREATMENT

This product naturally eliminates blanketweed (string algae) without harming fish or plants. It contains unique, effective natural plant extracts and a special bacteria blend. Value-for-money, highly concentrated powder.

CODE	DESCRIPTION	TREATS	PRICE
18050	String Algae Treatment - 22.5g Sachet	6,250L	\$26.95
18052	String Algae Treatment - 93g Jar	25,000L	\$89.95



POND CONDITIONING BLOCK

Pond Conditioning Blocks are specially formulated to keep your pond water crystal clear by preventing unsightly coloured water due to excess sunlight. This product will also remove chlorine, chloramine and ammonia, making the water safe for fish.

Mainly suited to very small ponds which don't justify a biofilter.

CODE	DESCRIPTION	TREATS	PRICE
18120	Pond Conditioning Block - 20g (Minimum Order Qty: 5) Dosage: Use one section of the block per 200L of pond water. (One complete block will treat 800L)	800L	\$11.95



FEATURE POND TREATMENT BLOCK

Feature Pond Blocks will maintain crystal clear water and clean water features. DO NOT use in ponds with fish or plants, or ponds with excessive splash. For ponds with fish or aquatic plants, use PondPro Feature Algae Clear natural pond treatment.

CODE	DESCRIPTION	TREATS	PRICE
18122	Feature Pond Treatment Block - 20g (Minimum Order Qty: 5) Dosage: Use one section of the block per 200L of pond water. (One complete block will treat 800L)	800L	\$11.95



WATERWALLS

WATERWALLS

Waterfalls, waterwalls and focal point water features have been in vogue in gardens and outdoor living spaces for many years. Home owners have grown to love the sense of ambience and the soothing atmosphere waterwalls add to their outdoor spaces.

There are two main types of waterwalls to choose from, each providing a different effect - sheet descent waterwalls, and projecting waterwalls. Ensure you incorporate the waterwall design correctly into the installation, and specify the correct type for the project, as warranty does not cover removal and replacement costs.

SHEET DESCENT WATERWALLS

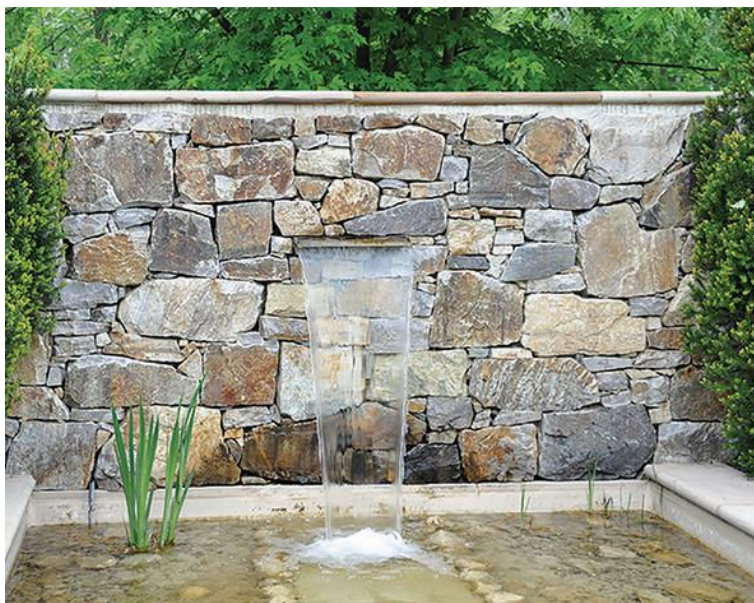
This is the "wall-washing" effect, where the sheet of water flows vertically down the face of the wall or surface. Install to flow down or between glass for a modern feel, or dramatise the effect by running the water down a surface studded with decorative stones or tiles - the variations are endless! Add a LED light bar to illuminate the effect after dark! With care in design, construction and installation, these waterwalls can be installed up to 3m high.

PROJECTING WATERWALLS

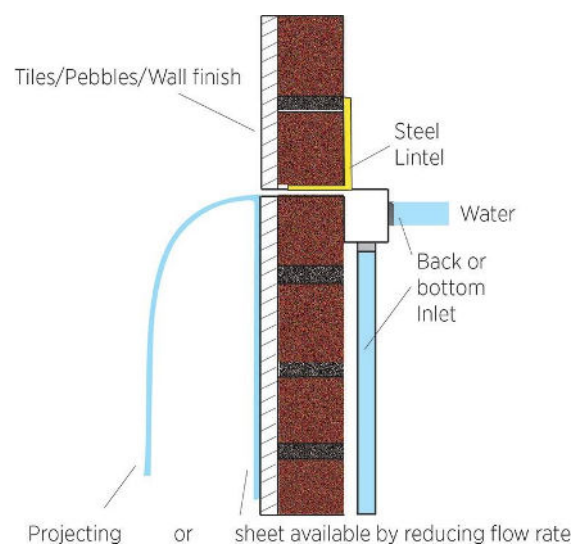
With a projecting waterwall, the curtain of water projects out from the wall in an arc, re-entering the pond away from the wall. This creates the impressive effect of a natural waterfall, with a some splash and soothing noise. Add a LED light bar to illuminate the effect after dark!

As these waterwalls are often noisier than sheet descent waterwalls, always consider your neighbours when installing. Due to increased flow rates being required to provide the projecting fall, a larger pump is required. A larger waterfall base pond is also required due to increased splash.

There are also restrictions on the maximum height projecting waterfalls can be installed at: typically 1.0-1.2m high for the Acrylic versions, and only 0.7m high for the "Combo" stainless steel units. If the unit is installed higher than this, the curtain of water will start to break up into droplets which may not be the desired effect. Consideration must be given also to the effect of wind, which will move the water-curtain around during its descent. This may result in excessive water loss.



INSTALLATION TIP



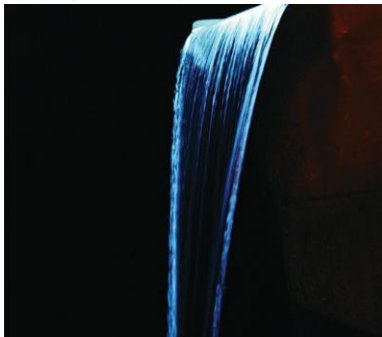
ACRYLIC WATERWALLS



These pressurised waterfall units are available in the following standard sizes. The 125mm nozzle versions are designed to fit in the mortar-line of bricks or blockwork. Always test unit before completely bricking in to ensure it is level and water is falling correctly. The projection may be adjusted with the flow supplied, approx. figures are given below.

Note: Customised specifications are NOT available on acrylic waterfalls.

CODE	INLET POSITION	INLET SIZE	SIZE	MIN. FLOW AT INLET (L/Hr) FOR SHEET DESCENT EFFECT	MIN. FLOW AT INLET (L/Hr) FOR PROJECTING EFFECT	PRICE
19506	Back	1 x 32mm FBSP	600mm, 30mm nozzle	2700	5400	\$489.95
19509	Back	1 x 32mm FBSP	900mm, 30mm nozzle	4050	8100	\$699.95
19512	Back	2 x 32mm FBSP	1200mm, 30mm nozzle	5400	10800	\$819.95
19515	Back	2 x 32mm FBSP	1500mm, 30mm nozzle	6750	13500	\$1189.95
19526	Bottom	1 x 32mm FBSP	600mm, 30mm nozzle	2700	5400	\$489.95
19529	Bottom	1 x 32mm FBSP	900mm, 30mm nozzle	4050	8100	\$699.95
19532	Bottom	2 x 32mm FBSP	1200mm, 30mm nozzle	5400	10800	\$819.95
19535	Bottom	2 x 32mm FBSP	1500mm, 30mm nozzle	6750	13500	\$1189.95
19559	Back	1 x 32mm FBSP	600mm, 125mm nozzle	2700	5400	\$619.95
19566	Back	1 x 32mm FBSP	900mm, 125mm nozzle	4050	8100	\$869.95
19573	Back	2 x 32mm FBSP	1200mm, 125mm nozzle	5400	10800	\$1099.95
19580	Back	2 x 32mm FBSP	1500mm, 125mm nozzle	6750	13500	\$1299.95
19606	Bottom	1 x 32mm FBSP	600mm, 125mm nozzle	2700	5400	\$619.95
19609	Bottom	1 x 32mm FBSP	900mm, 125mm nozzle	4050	8100	\$869.95
19612	Bottom	2 x 32mm FBSP	1200mm, 125mm nozzle	5400	10800	\$1099.95
19615	Bottom	2 x 32mm FBSP	1500mm, 125mm nozzle	6750	13500	\$1299.95



Add a light bar to create a spectacular display after dark! Refer next page.



IMPORTANT NOTES

- 1) **WARNING!** The outlet **MUST** be protected from direct sunlight. Do not have the outlet protruding from the wall.
- 2) Construct the surround to allow easy removal in the event of replacement. Warranty does not cover labour costs and is limited to product replacement only.
- 3) These products are extremely popular and as they are imported, stock-outs may occur. Please confirm availability prior to ordering.
- 4) Sizes are nominal and may vary slightly. This in no way affects the function of the product.
- 5) The nozzles must not be altered or modified in any way and must be fully enclosed (except outlet) when installation is complete.
- 6) Maximum pressure at inlet of 30kPa. Excessive pressure will cause damage to the internal structure, which is not covered by warranty.

BASIC INSTALLATION GUIDELINES

- 1) Ensure front outlet is perfectly level. The recommended installation height is 800 to 1000mm from the water surface. Seal around the outlet to prevent possibility of any leakage back into the wall.
- 2) Fit valves to each inlet and ensure tubing length is identical to all inlets.
- 3) Install your pump. Ensure it is correctly sized!
- 4) Pump prefilter or in-line strainer must be installed to prevent leaf particles, etc. from entering the waterfall.
- 5) A steel lintel must be installed for any wall or load-bearing structure built above the waterfall.

COMBO WATERWALLS - STAINLESS STEEL

These stainless steel waterfalls may be used for either wall washing or projecting effects. When used as a projecting waterfall, they should not be installed above 700mm high. The projection from the wall is approximately 100mm. This must be considered in the design and construction. Note that customised specifications are not available with these Combo units.

CODE	LENGTH	INLET/S SIZE AND POSITION (MAY VARY)	MIN. FLOW AT INLET (L/Hr)		PRICE
			SHEET DESCENT	PROJECTING	
19016	600mm	1 x 25mm FBSP, dual bottom & back (centre)	2700	4320	\$749.95
19009	900mm	2 x 25mm FBSP, dual bottom & back (225mm in from ends)	4050	6480	\$809.95
19012	1200mm	2 x 25mm FBSP, bottom (300mm in from ends) ORDER IN ITEM	5400	8640	\$1369.95
19112	1200mm	2 x 25mm FBSP, back (300mm in from ends) ORDER IN ITEM	5400	8640	\$1369.95
19106	1500mm	2 x 25mm FBSP, bottom (375mm in from ends) ORDER IN ITEM	6750	10800	\$1624.95
19116	1500mm	2 x 25mm FBSP, back (375mm in from ends) ORDER IN ITEM	6750	10800	\$1624.95



Get creative! Waterfalls make for an impressive feature in any pool, spa, fountain, outdoor or even pond area!



LED LIGHT BARS FOR ACRYLIC WATERWALLS

These remote controllable multi-coloured light bars will turn your acrylic water wall into a stunning night-time feature. The LED light bar is simply inserted into the hole at the back of the waterfall unit. Using advanced technology, this LED design is supplied complete with an easy to use 8 colour multi-function remote control which operates up to 10m from the control box. Up to 8 single colours or flashing and changing modes are possible.

CODE	DESCRIPTION	PRICE
LED600MC	600mm Remote Control Multi Coloured LED Light Bar -Low voltage transformer included	\$389.95
LED900MC	900mm Remote Control Multi Coloured LED Light Bar - Low voltage transformer included	\$459.95
LED1200MC	1200mm Remote Control Multi Coloured LED Light Bar -Low voltage transformer included	\$549.95
LED1500MC	1500mm Remote Control Multi Coloured LED Light Bar - Low voltage transformer included	\$649.95



IMPORTANT NOTES

- 1) These products are very popular and stock-shortages may occur. Please confirm availability when ordering.
- 2) All installations must be constructed to allow the LED light bar to be removed and replaced if necessary.
- 3) Sizes are nominal and may vary slightly. This in no way affects the function of the product.
- 4) These units must not be altered or modified in any way & must be protected from direct sunlight when installation is complete.
- 5) For installation, refer to the notes on the previous page.

GARDEN & POND LIGHTING

Submersible lights are intended to highlight the pond or a feature of it, such as a statue or waterfall. With a few well-placed lights your water feature, pond or garden will transform into an impressive display after dark! Mix and match the warm-white and the multi-colour versions for a more stunning effect, and with the added option of remote control, the list of effects is endless! LED lights are economical to run, and have a long lamp life – up to 8 times the length of halogens.

When installing, it is important to remember the effectiveness of the light in a pond at night depends on the amount of surrounding ambient light as the less lighting in the vicinity of the pond or garden, the more effective a pond light will be.



POND LIGHTING - LED SPOTLIGHTS

Ideal for aquariums, table fountains, small ponds or to illuminate pond-side ornaments and plants! Suitable for use both in and out of the water.



CODE	DESCRIPTION	PRICE
9802	PondPro Pond & Garden Light 12 LED 1.6W White with Colour Lenses - 3.0m cable with 12V indoor transformer	\$64.95
2003874	Pond & Garden Light 12 LED Warm White with 12V Transformer	\$109.95
15766	PondPro Compact LED set of 3 x 2W White with Colour Lenses with 12V Indoor Transformer	\$114.95
2010346	PondMAX Pond & Garden Light 3 LED Warm White	\$189.95
2010353	PondMAX Pond & Garden Light 3 LED Multi Colour w Remote	\$319.95

TRANSFORMERS



CODE	DESCRIPTION	PRICE
2009616	PondMAX 12V Outdoor Transformer 20VA	\$87.95
2009623	PondMAX 12V Outdoor Transformer 30VA	\$89.95
22351	PondMAX 12V Outdoor Transformer 96VA	\$159.95
6011425	PondMAX 12V Outdoor Transformer 150VA	\$319.95

FOUNTAIN RING LIGHT

Includes 12 Volt plug-pack transformer, 10m cable, and uses only 2.4 Watts of power. Fits 16 to 19mm tubing. Ideal for use in water features and ponds - suitable for use in and out of the water.



CODE	DESCRIPTION	PRICE
20292	White Fountain Ring LED - 12 LED	\$119.95

MIST DIFFUSERS

Add drama and mood to your pond or water feature with these high quality mist diffusers! These mist diffusers use ultra-sonic vibrations to produce mist on the surface of your pond or water feature. No chemicals or fumes whatsoever - just water required.



CODE	DESCRIPTION	PRICE
20402	Mist Diffuser with Colour Controllable LED lights with Transformer 24 Volt	\$149.95
20422	Spare Membrane and Key 20mm	\$39.95

WHISKEY / WINE BARREL & HAND PUMP KIT

A top selling water feature. Includes authentic half whiskey / wine barrels, cast iron hand pump, and all the tubes and fittings required to get the water moving.

CODE	DESCRIPTION	PRICE
21200	<p>Whiskey Barrel and Hand Pump Kit</p> <p>Includes barrel liner, submersible pump, 22" cast iron pump, wooden bracket, tubing and fittings.</p> <p>Barrel size: 650mm diameter x 440mm high (varies) (Overall height 940mm)</p> <p>Note: The bands on the barrel and the hand-pump may be rusty - this is not a fault but is an inherent feature which adds to the authenticity. Hand pump colour may vary.</p>	\$999.95



ORNAMENTAL CAST IRON HAND PUMPS

These authentic cast iron hand pumps are perfect for water features and as garden ornaments. Please note that the cast iron interior is untreated and may discolour the water over time. Not suitable for potable water or animal drinking water.

CODE	DESCRIPTION	PRICE
21252	<p>Cast Iron 22" – Short Spout 1 1/4" FBSP inlet 660mm high including handle, 410mm wide (spout approx 210mm long) Note: Colours and sizes vary</p>	\$299.95



HALF WINE BARRELS & PLANTERS

Authentic half wine/whiskey barrels make the perfect planter or trough for a water feature.

CODE	DESCRIPTION	PRICE
21270	Authentic Used Wine Barrel Half - Size & Conditions Vary (Approx. 770mm dia. x 440mm H)	\$369.95
21276	Used Barrel Half with Poly Liner 21289	\$539.95



When barrels dry out, the timber may show some gaps. This is just the natural characteristics of the timber. To overcome, soak the barrel with water. This will cause the timber to expand and close the gaps.

WINE BARREL LINER

Make your wine barrel water tight by adding a high quality HDPE liner.

CODE	DESCRIPTION	PRICE
21289	<p>Wine Barrel Liner - 80L Suits used and new wine barrels 735mm OD (630mm ID) x 375mm deep</p>	\$229.95



POND ORNAMENTS

Encourage wildlife to your pond ecosystem and deter unwanted predators with these ducklings or create drama and suspense to your pond with these realistic looking resin hand painted croc ornaments.



CODE	DESCRIPTION	PRICE
11805	Yellow Floating Ducklings - 90mm (Min. qty: 3)	\$7.95
22193	Lurking Croc Floating Ornament 350mm	\$44.95
22191	Snapping Croc Floating Ornament 460mm	\$79.95



ARTIFICIAL FLOATING LILIES

Add an instant pop of colour and life to any pond with these realistic artificial floating lilies. Incredibly realistic drops of dew cover the petals to complete the look! Available in three great colours.



CODE	DESCRIPTION	COLOUR	PRICE
22220	Deco Floating Lilies Set of 3	Pink	\$27.95
22224		White	\$27.95
22226		Yellow	\$27.95



Create Your Own Garden Paradise

POND COVER NETS

Pond covers are ideal for stopping leaf pollution from upsetting the cleanliness and chemical balance of the pond water, as the mesh design prevents the litter from sinking into the pond. Pond cover nets also protect your fish from potential predators such as birds and cats. Includes fixing pegs to firmly secure the net.

CODE	DESCRIPTION	PRICE
25202	Cover Net - 5m x 6m	\$94.95
25203	Cover Net - 6m x 4m	\$69.95
25204	Cover Net - 10m x 6m	\$144.95



AQUATIC PLANTING BASKETS

Aquatic planting baskets are very helpful in preventing the uncontrolled growth of the plants in the pond, and being able to use pond earth only where it is required. Pond earth is no longer washed away, and the plants can be removed easily at any time.

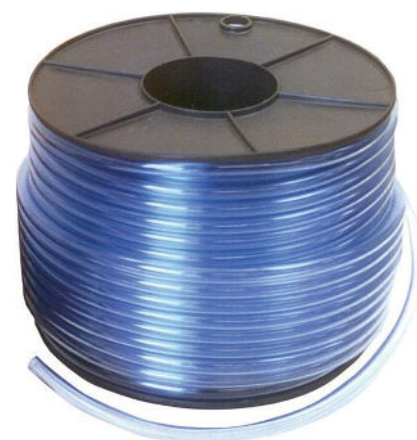
CODE	DESCRIPTION	DIMENSIONS	MIN QTY	PRICE
25301	Marginal Square - 1L	110mm x 110mm x 110mm	4	\$3.95
25302	Small Square - 2.5L	200mm x 200mm x 90mm	4	\$5.95
25303	Medium Square - 5L	240mm x 240mm x 140mm	4	\$6.95
25304	Large Square - Fine Mesh - 10L	290mm x 290mm x 190mm	4	\$10.95
25306	Round / Marginals - 1L	140mm dia x 100mm	4	\$3.95
25307	Round - 2L	170mm dia x 130mm	4	\$6.95
25309	Kidney Shape 8L	460mm x 170mm x 150mm	4	\$15.95



CLEAR VINYL TUBING

Clear Vinyl Tubing is suitable for transfer of liquids at low pressure. The clear hose provides a visual reference for easy identification of blockages or foreign objects.

CODE	DESCRIPTION	DIAMETER	LENGTH	PRICE
26108	Clear Vinyl Tubing Coil	8mm	30m	\$54.95
26110		10mm	30m	\$74.95
26112		12mm	30m	\$84.95
26116		16mm	30m	\$129.95
26120		20mm	30m	\$179.95
26125		25mm	30m	\$299.95
26210		10mm	75m	\$149.95
26212		12mm	50m	\$149.95



'POOLFLEX' SPIRAL RIBBED ANTI-KINK HOSE

Spiral ribbed hose does not kink or flatten, even on tight bends. Ideal for ponds, pools and water features.



CODE	DESCRIPTION	DIAMETER	LENGTH	PRICE
26412	Poolflex Anti-Kink Spiral Ribbed Hose - Black	13mm	30m	\$179.95
26420		20mm	30m	\$229.95
26425		25mm	30m	\$279.95
26432		32mm	30m	\$329.95
26440		40mm	30m	\$449.95
26450		50mm	20m	\$469.95

HOSE CLAMPS FOR SPIRAL RIBBED TUBING



CODE	DESCRIPTION	PRICE
26712	Hose Clamp S/Steel wire 12mm each	\$19.95
26720	Hose Clamp S/Steel wire 20mm each	\$19.95
26725	Hose Clamp S/Steel wire 25mm each	\$17.95
26732	Hose Clamp S/Steel wire 32mm each	\$18.95
26740	Hose Clamp S/Steel wire 40mm each	\$20.95
26749	Hose Clamp S/Steel wire 50mm each	\$21.95

TRANSFORMERS & ELECTRICAL ACCESSORIES

Transformers are required for low voltage pumps and all submersible lights. Most low-voltage pumps are supplied with transformers as 'kits'. If there is a requirement for a transformer, select it according to: 1.output voltage, and 2. power as expressed in VoltAmps (VA) – equivalent to Watts. The other important consideration is cable length – long lengths of cable may result in voltage drop causing damage to the pump. Please ask for advice if unsure. All transformers or plug packs listed are AC not DC.

IMPORTANT NOTES:

It is important to check the voltage and wattage of the pump or light.

The VA of the transformer must be equal to or greater than the combined wattage of pump or lights.



CODE	DESCRIPTION	IP RATING	VOLT / VA	PRICE
27211	Transformer to suit RP550LV and some water feature pumps & lights - Weatherproof	IP68	12 Volt 20VA	\$52.95
27214	Transformer to suit RP850LV/RP1100LV/RP1500LV Weatherproof	IP68	24 Volt 30VA	\$79.95
27217	Transformer to suit RP2400LV Weatherproof	IP68	24 Volt 60VA	\$124.95
27221	Transformer to suit RP4000LV Weatherproof	IP68	24 Volt 100VA	\$194.95
27251	Cable Connector 3-Way 2-Pin Weatherproof Low Voltage		12-24Volt	\$39.95
27253	Cable Connector 5-Way 2-Pin Weatherproof Low Voltage		12-24Volt	\$59.95
9901	Extension Lead for REEFE Low Volt Pond Pump RPLV Series - 10m		12-24Volt	\$69.95

PARTS

CODE	DESCRIPTION
REEFE POND PUMP IMPELLER COVER	
2933	Impeller Cover RP260
2940	Impeller Cover RP550
2209	Impeller Cover RP610
2216	Impeller Cover RP850/900/1100/1500 RFK1100/1500
2223	Impeller Cover RP2400 RFK2400
2230	Impeller Cover RP4000 RFK4000
2957	Impeller Cover RFK5000
2247	Impeller Cover with O-Ring, Bolts & Nuts RP6000
2254	Impeller Cover with O-Ring, Bolts & Nuts RP8000
2261	Impeller Cover with O-Ring, Bolts & Nuts RP10000
2278	Impeller Cover with O-Ring, Bolts & Nuts RP18000
2285	Impeller Cover with O-Ring, Bolts & Nuts RP28000
2292	Impeller Cover O-Ring only RP6000
2308	Impeller Cover O-Ring only RP8000
2315	Impeller Cover O-Ring only RP10000
2322	Impeller Cover O-Ring only RP18000
2339	Impeller Cover O-Ring only RP28000
REEFE POND PUMP IMPELLER	
2346	Impeller, Shaft & Rubber Ends - RP260
2353	Impeller, Shaft & Rubber Ends - RP550
2360	Impeller, Shaft & Rubber Ends - RP610
2377	Shaft with Rubber Ends - RP610
2384	Impeller, Shaft & Rubber Ends RP850/900/1100/1500 RFK1100/1500
2391	Shaft with Rubber Ends - RP850/900/1100/1500 RFK1100/1500
2407	Impeller, Shaft & Rubber Ends - RP2400
2414	Shaft with Rubber Ends - RP2400
2421	Impeller, Shaft & Rubber Ends - RP4000 RFK4000
2438	Shaft with Rubber Ends - RP4000 RFK4000
2445	Impeller, Shaft & Rubber Ends - RFK5000
2452	Shaft with Rubber Ends - RFK5000
4349	Impeller, Shaft & Rubber Ends - RFK8500
2469	Impeller and Shaft - RP6000
2476	Impeller and Shaft - RP8000
2483	Impeller and Shaft - RP10000
2490	Impeller and Shaft - RP18000
2841	Impeller and Shaft - RP28000

CODE	DESCRIPTION
POND PUMP FILTER FOAM	
2858	Filter Foam - RP610
2865	Filter Foam - RP850/900/1100/1500
2872	Filter Foam - RP2400
3052	Filter Foam - RP3500
2889	Filter Foam - RP4000
2896	Filter Foam - RFK1100/1500
2902	Filter Foam - RFK2400
2919	Filter Foam - RFK4000
2926	Filter Foam - RFK5000
7456	Filter Foam - RFK8500
REEFE SUBMERSIBLE BIO FILTER	
1141	Filter Foam Set of 2 for RTF2000
REEFE POND SOLAR PUMP IMPELLER	
2964	Impeller - RSF175
2971	Impeller - RSF470/980 RSFB760/800
4081	Impeller - RSF300-RSFB250
2988	Impeller - RSF980/1360 RSFB1600
11058	Impeller - RSF2500 RSFB2500

REEFE PUMPS

REEFE Pumps Australia is a brand owned and distributed by Ascento Group Australia. With REEFE, pump performance, installation and maintenance is ... Better, Faster and Easier.

BRAND MISSION

To provide unsurpassed service and value to the Australian pump market.



BETTER

100% Australian Owned.

European made product range designed for the Australian pump market. Premium quality product at competitive pricing.



FASTER

Reach solutions faster through our extensive pump range that services the domestic, commercial, agricultural and waste water pump market in Australia. Each product is backed by the exceptional REEFE® Pumps service and support guarantee.



EASIER

Superior product designed using advanced technology to increase service life, ease of installation and maintenance. Product manufactured to stringent testing standards guaranteeing efficient and durable product to better service the pump market.

PUMPS
SOLAR PUMPS
FOUNTAIN NOZZLES
PONDS POND LINERS
TREATMENTS
LIGHTING
FEATURES